

HENRY NORRIS & ASSOCIATES

ARCHITECTURE & ENVIRONMENTAL DESIGN

30 N. PALAFOX
PENSACOLA, FL
32502
(850)432-6011
FAX 435-9001

ABACO
ORANGE BEACH

JOB #: Project Number
CAD: CHECKED; HN
DATE: 11-20-23

REVISIONS:

SEAL:

SHEET TITLE:
PHASE 1 SITE PLAN - NEW

A-1

PHASE I

PROJECT SUMMARY

BLDG. B

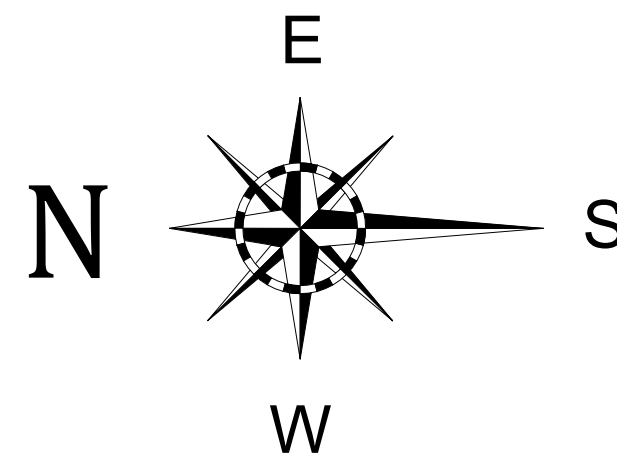
- 19 UNITS -TOTAL
- (13) K UNITS - 3 BED/ 3 BATH (1540 SF)
- (6) B UNITS - 4 BED/ 3 BATH (1775 SF)

BLDG. A

- 36 UNITS -TOTAL
- (24) A UNITS - 3 BED/ 3 BATH (1540 SF)
- (3) H UNITS - 4 BED/ 4 BATH (2140 SF)
- (3) E UNITS - 3 BED/ 3 BATH W/ MEDIA (1575 SF)
- (3) F UNITS - 4 BED/ 4 1/2 BATH (2125 SF)
- (2) G UNITS - 3 BED/ 2 1/2 BATH (1250 SF)
- (1) J UNIT - 2 BED/ 2 BATH (925 SF)



GRIFFITH MARINA ROAD



SITE PLAN -PHASE I

1" = 30'

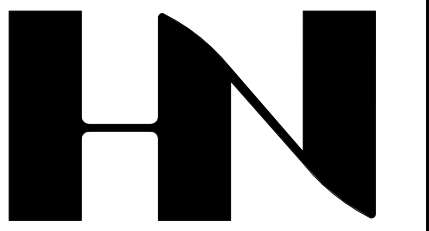
J. Alan Kent
DEVELOPMENT

Cunningham & Head

RE/MAX Paradise
Bob Shallow 251-948-8888

"SUBJECT TO CHANGE"
"NEED NOT BE BUILT"





HENRY NORRIS & ASSOCIATES

ARCHITECTURE & ENVIRONMENTAL DESIGN

30 N. PALAFOX
PENSACOLA, FL
32502
(850)432-6011
FAX 435-9001

ABACO
ORANGE BEACH

JOB #: Project Number
CAD:
CHECKED: HN
DATE: 11-20-23

REVISIONS:

SEAL:

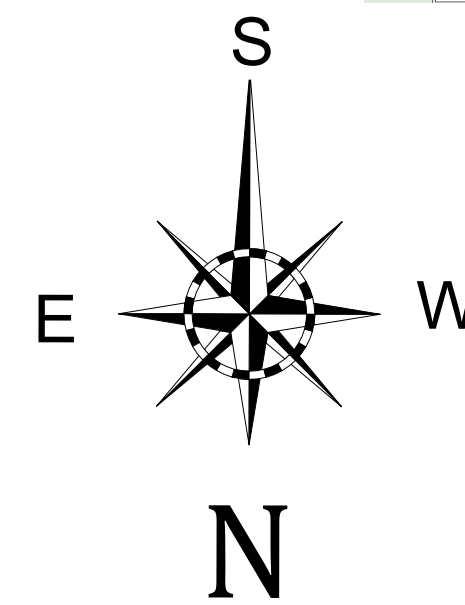
SHEET TITLE:
1ST LEVEL BLDG. A

A-2



BLDG. A 1ST LEVEL FLOOR PLAN

ABACO
Orange Beach



PHASE I

- 24 TOTAL UNIT A
- 3 TOTAL UNIT E
- 3 TOTAL UNIT F
- 2 TOTAL UNIT G
- 3 TOTAL UNIT H
- 1 TOTAL UNIT J

36 UNITS TOTAL

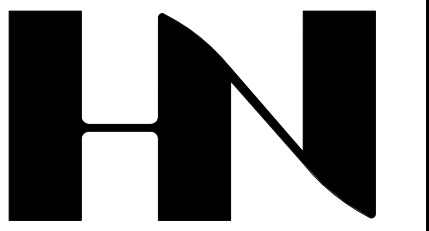
J. Alan Kent
DEVELOPMENT

Cunningham & Head



RE/MAX Paradise
Bob Shallow 251-948-8888

"SUBJECT TO CHANGE"
"NEED NOT BE BUILT"



HENRY NORRIS & ASSOCIATES

ARCHITECTURE & ENVIRONMENTAL DESIGN

30 N. PALAFOX
PENSACOLA, FL
32502
(850)432-6011
FAX 435-9001

ABACO
ORANGE BEACH

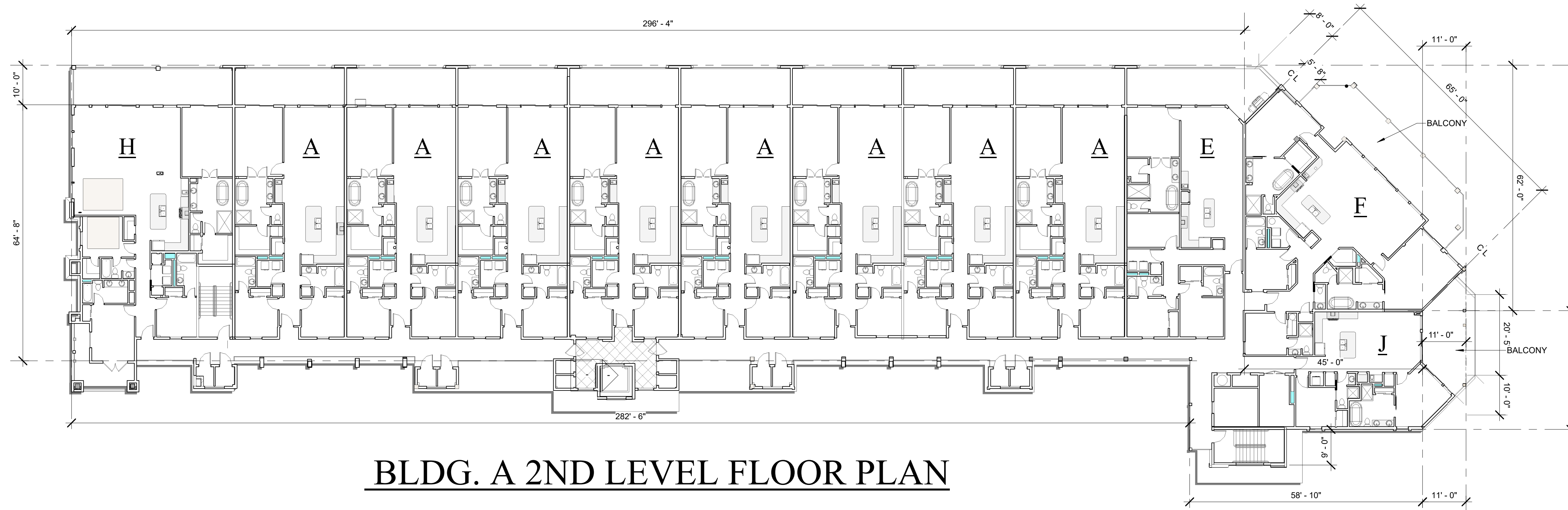
JOB #: Project Number
CAD:
CHECKED: HN
DATE: 11-20-23

REVISIONS:

SEAL:

SHEET TITLE:
2ND LEVEL BLDG. A

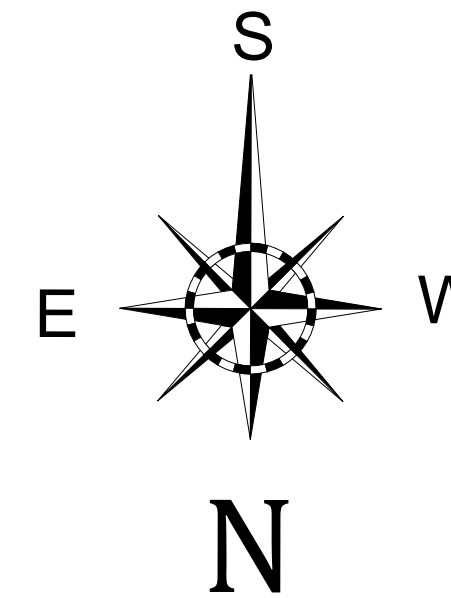
A-3



BLDG. A 2ND LEVEL FLOOR PLAN



PHASE I



24 TOTAL	UNIT A 3 BEDROOM 3 BATH 1540	2 TOTAL	UNIT G 3 BEDROOM 2 1/2 BATH 1250
3 TOTAL	UNIT E 3 BEDROOM W/MEDIA 3 BATH 1575	3 TOTAL	UNIT H 4 BEDROOM 4 BATH 2140
3 TOTAL	UNIT F 4 BEDROOM 4 1/2 BATH 2125	1 TOTAL	UNIT J 2 BEDROOM 2 BATH 925

36 UNITS TOTAL

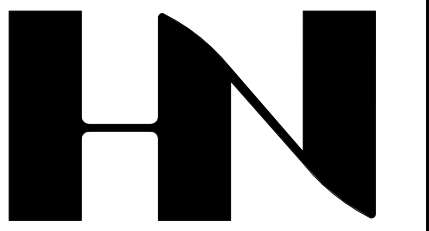
BLDG. A



RE/MAX Paradise

Bob Shallow 251-948-8888

"SUBJECT TO CHANGE"
"NEED NOT BE BUILT"



HENRY NORRIS & ASSOCIATES

ARCHITECTURE & ENVIRONMENTAL DESIGN

30 N. PALAFOX
PENSACOLA, FL
32502
(850)432-6011
FAX 435-9001

ABACO
ORANGE BEACH

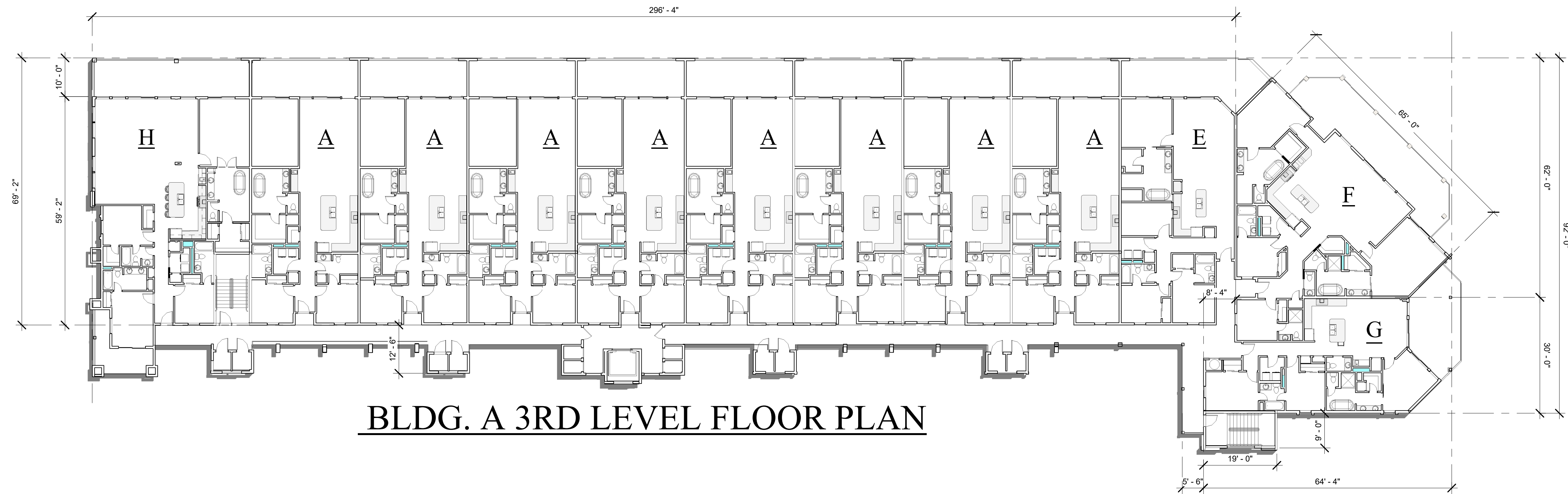
JOB #: Project Number
CAD:
CHECKED: HN
DATE: 11-20-23

REVISIONS:

SEAL:

SHEET TITLE:
3RD LEVEL BLDG. A

A-4



BLDG. A 3RD LEVEL FLOOR PLAN



PHASE I

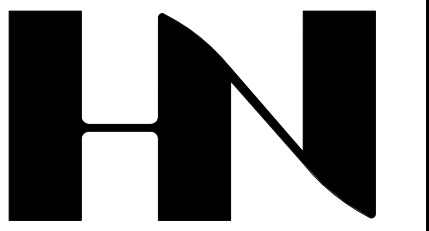
24 TOTAL	UNIT A 3 BEDROOM 3 BATH 1540	2 TOTAL	UNIT G 3 BEDROOM 2 1/2 BATH 1250
3 TOTAL	UNIT E 3 BEDROOM W/MEDIA 3 BATH 1575	3 TOTAL	UNIT H 4 BEDROOM 4 BATH 2140
3 TOTAL	UNIT F 4 BEDROOM 4 1/2 BATH 2125	1 TOTAL	UNIT J 2 BEDROOM 2 BATH 925

36 UNITS TOTAL
BLDG. A



RE/MAX Paradise
Bob Shallow 251-948-8888

"SUBJECT TO CHANGE"
"NEED NOT BE BUILT"



HENRY NORRIS & ASSOCIATES

ARCHITECTURE & ENVIRONMENTAL DESIGN

30 N. PALAFOX
PENSACOLA, FL
32502
(850)432-6011
FAX 435-9001

ABACO
ORANGE BEACH

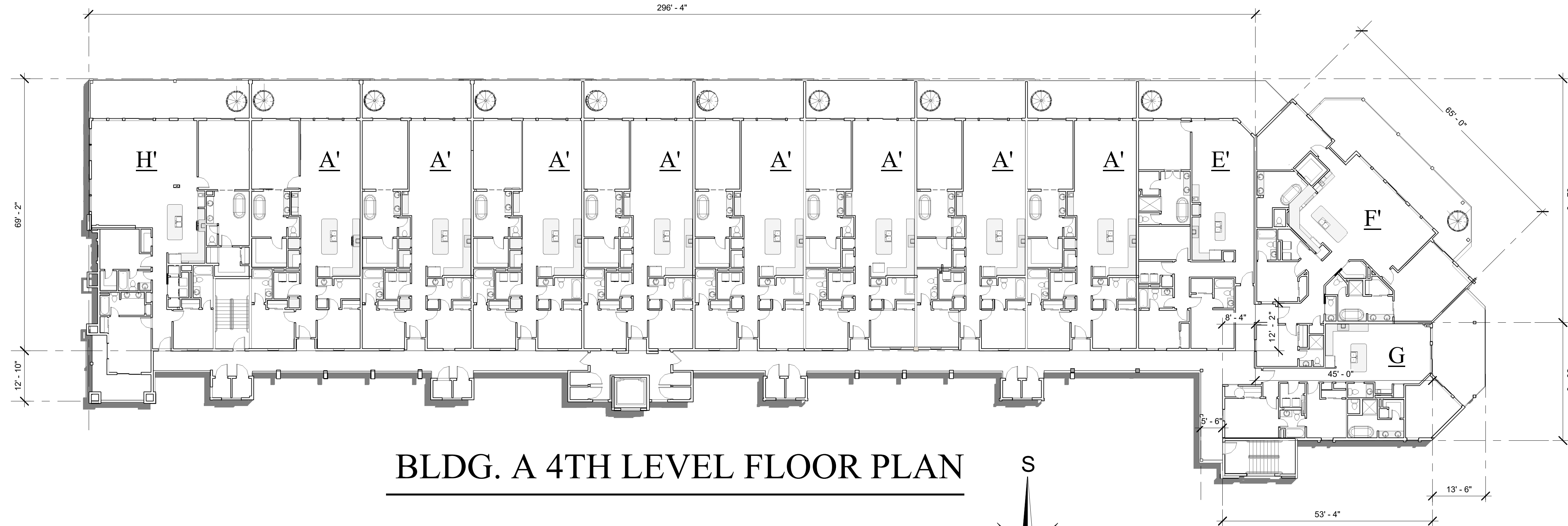
JOB #: Project Number
CAD:
CHECKED: HN
DATE: 11-20-23

REVISIONS:

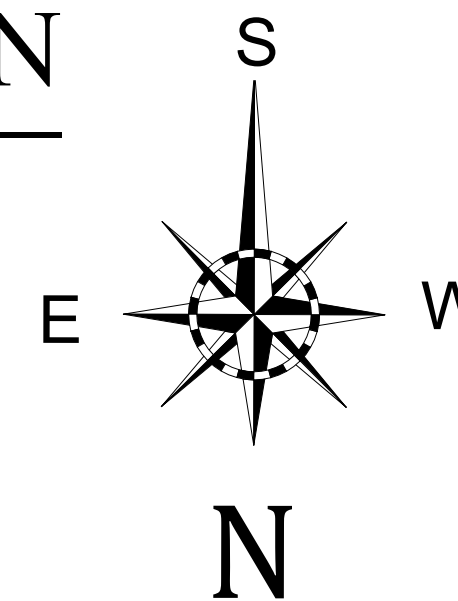
SEAL:

SHEET TITLE:
4TH LEVEL BLDG. A

A-5



BLDG. A 4TH LEVEL FLOOR PLAN



PHASE I

24 TOTAL	UNIT A 3 BEDROOM 3 BATH 1540	2 TOTAL	UNIT G 3 BEDROOM 2 1/2 BATH 1250
3 TOTAL	UNIT E 3 BEDROOM W/MEDIA 3 BATH 1575	3 TOTAL	UNIT H 4 BEDROOM 4 BATH 2140
3 TOTAL	UNIT F 4 BEDROOM 4 1/2 BATH 2125	1 TOTAL	UNIT J 2 BEDROOM 2 BATH 925

36 UNITS TOTAL
BLDG. A

J. Alan Kent
DEVELOPMENT

Cunningham & Head



RE/MAX Paradise
Bob Shallow 251-948-8888

"SUBJECT TO CHANGE"
"NEED NOT BE BUILT"



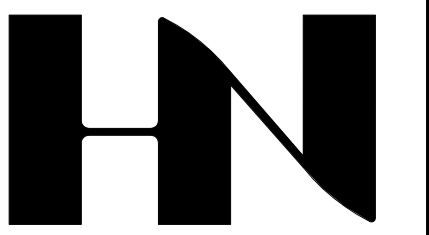
BLDG. A SOUTH ELEVATION



BLDG. A EAST ELEVATION



BLDG. A WEST ELEVATION



HENRY NORRIS
&
ASSOCIATES

ARCHITECTURE
&
ENVIRONMENTAL
DESIGN

30 N. PALAFOX
PENSACOLA, FL
32502
(850)432-6011
FAX 435-9001

ABACO
ORANGE BEACH

JOB #: Project Number
CAD:
CHECKED: HN
DATE: 11-20-23

REVISIONS:

SEAL:

SHEET TITLE:
BLDG. A ELEVATIONS

A-6



J. Alan Kent
DEVELOPMENT

C Cunningham & Head



RE/MAX Paradise
Bob Shallow 251-948-8888

ABACO
Orange Beach

"SUBJECT TO CHANGE"

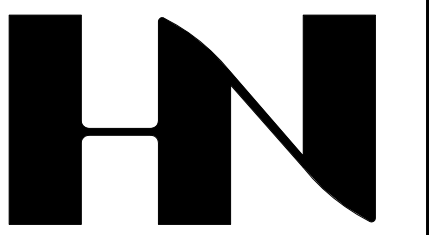
"NEED NOT BE BUILT"



BLDG. A - NORTH ELEVATION



ENTRY TO PHASE I



HENRY NORRIS
&
ASSOCIATES

ARCHITECTURE
&
ENVIRONMENTAL
DESIGN

30 N. PALAFOX
PENSACOLA, FL
32502
(850)432-6011
FAX 435-9001

ABACO
ORANGE BEACH

JOB #: Project Number
CAD:
CHECKED: HN
DATE: 11-20-23

REVISIONS:

SEAL:

SHEET TITLE:
BLDG. A ELEV. &
PERSPECTIVE

A-7



J. Alan Kent
DEVELOPMENT

Cunningham & Head



RE/MAX Paradise
Bob Shallow 251-948-8888

ABACO
Orange Beach

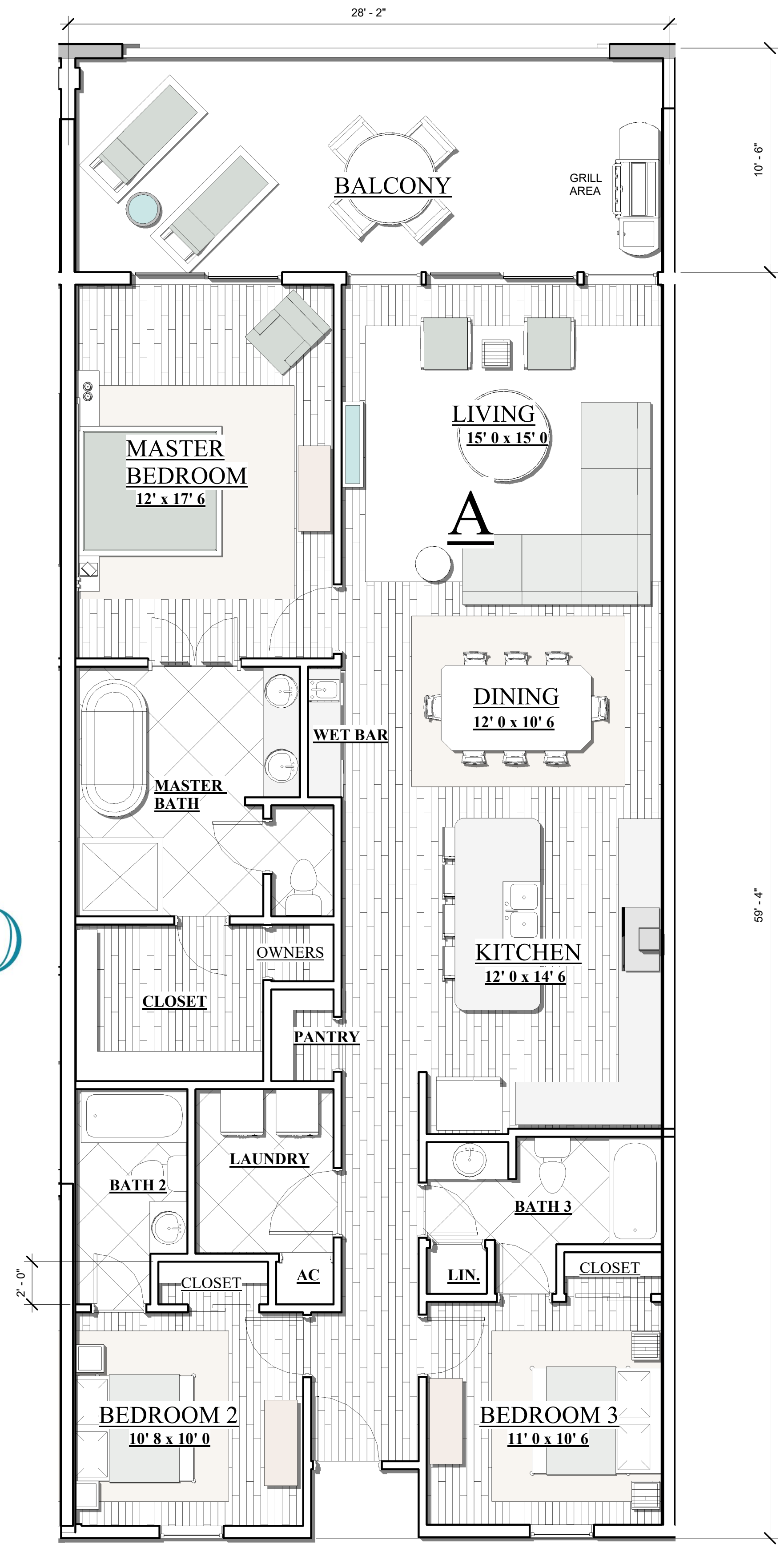
"SUBJECT TO CHANGE"

"NEED NOT BE BUILT"



UNIT H FLOOR PLAN

4 BEDROOM 4 BATH 2140
S.F. 535 SF BALCONY

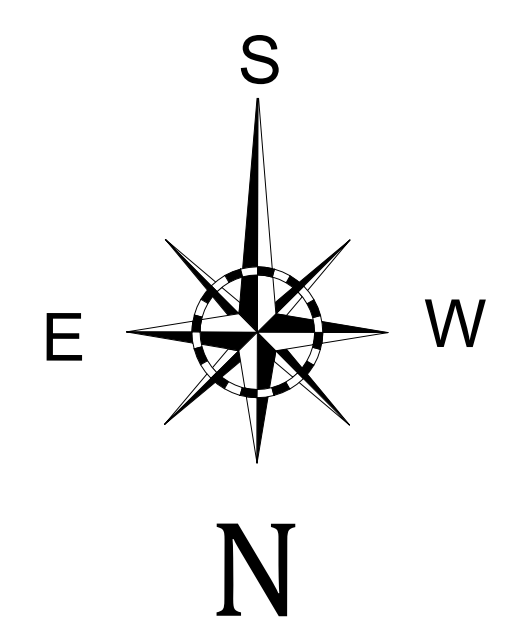


UNIT A FLOOR PLAN

3 BEDROOM 3 BATH
1540 S.F. 275 SF BALCONY

ABACO
Orange Beach

BLDG A



RE/MAX Paradise
Bob Shallow 251-948-8888

"SUBJECT TO CHANGE"
"NEED NOT BE BUILT"



HENRY NORRIS
&
ASSOCIATES

ARCHITECTURE
&
ENVIRONMENTAL
DESIGN

30 N. PALAFOX
PENSACOLA, FL
32502
(850)432-6011
FAX 435-9001

ABACO
ORANGE BEACH

JOB #: Project Number
CAD:
CHECKED; HN
DATE: 11-27-23

REVISIONS:

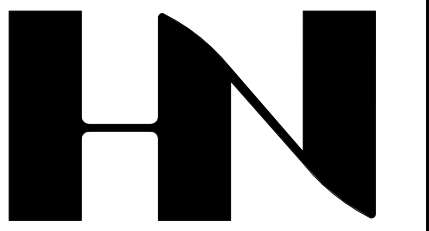
SEAL:

SHEET TITLE:
UNITS H & A - BLDG. IV

A-8

J. Alan Kent
DEVELOPMENT





HENRY NORRIS & ASSOCIATES

ARCHITECTURE & ENVIRONMENTAL DESIGN

30 N. PALAFOX
PENSACOLA, FL
32502
(850)432-6011
FAX 435-9001

ABACO
ORANGE BEACH

JOB #: Project Number
CAD:
CHECKED: HN
DATE: 11-20-23

REVISIONS:

SEAL:

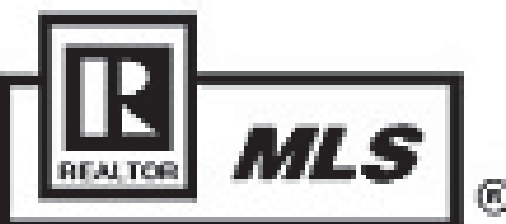
SHEET TITLE:
UNIT F IN BLDG. A

A-9

ABACO
Orange Beach

J. Alan Kent
DEVELOPMENT

Cunningham & Head

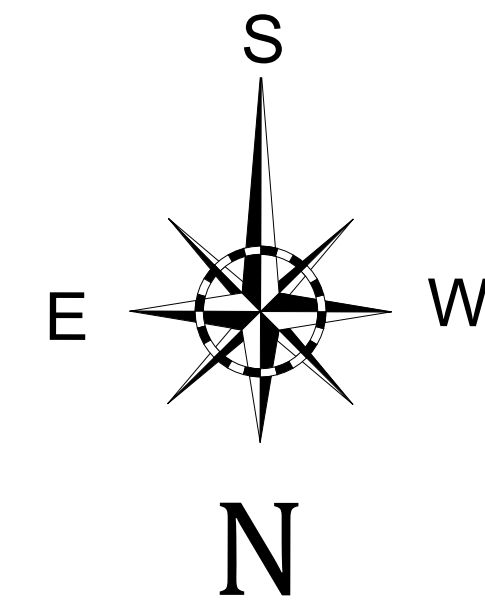
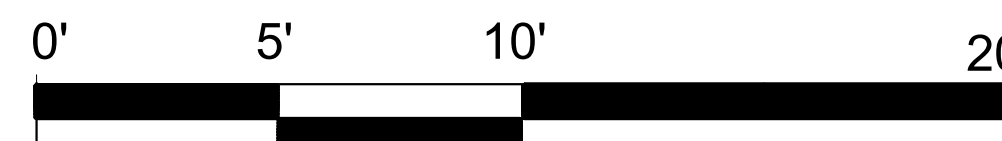


RE/MAX Paradise
Bob Shallow 251-948-8888



BLDG A
UNIT F FLOOR PLAN

4 BED 4 1/2 BATH
2125 SF 480 SF BALCONY



"SUBJECT TO CHANGE"

"NEED NOT BE BUILT"



UNIT E FLOOR PLAN

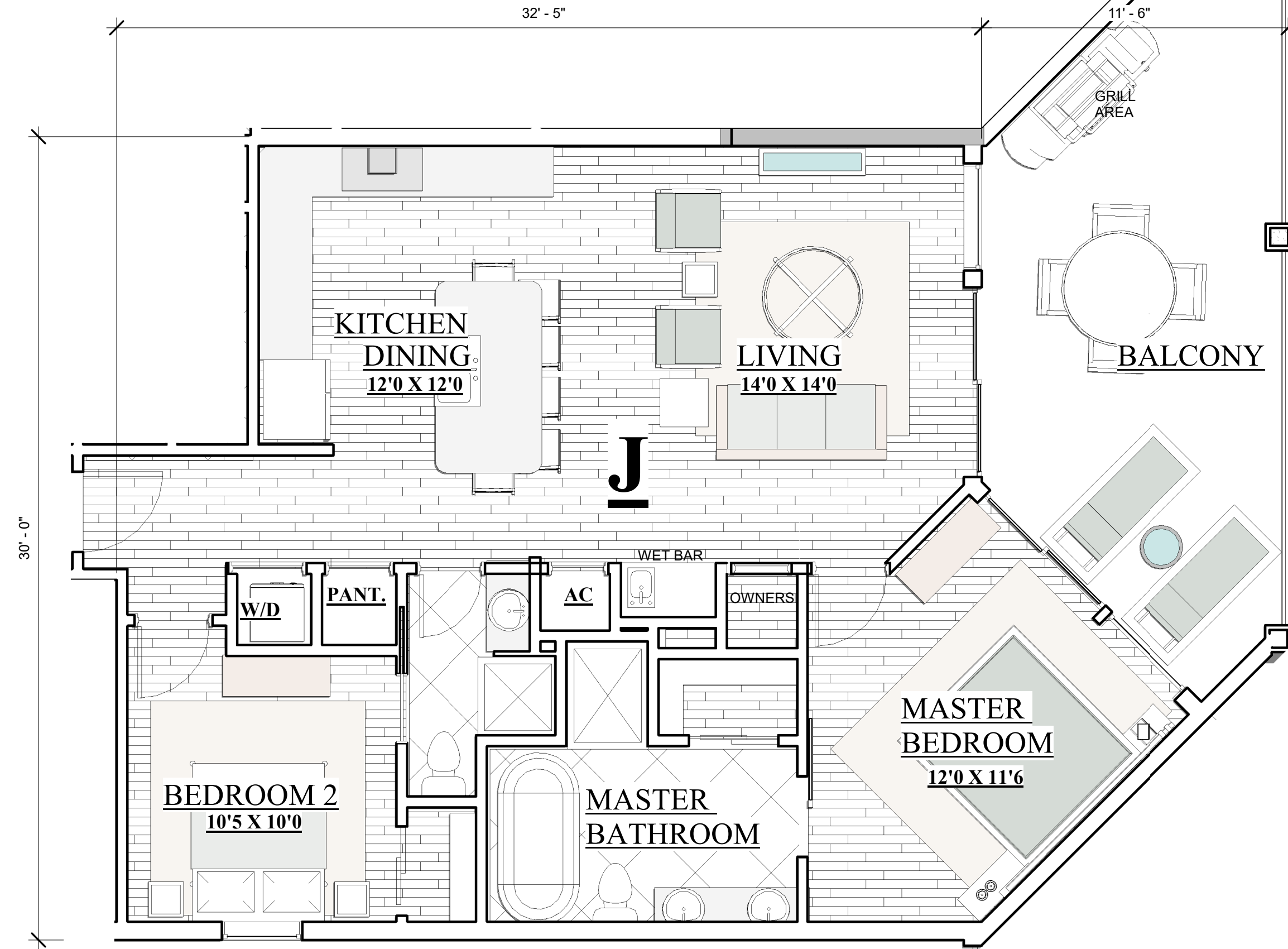
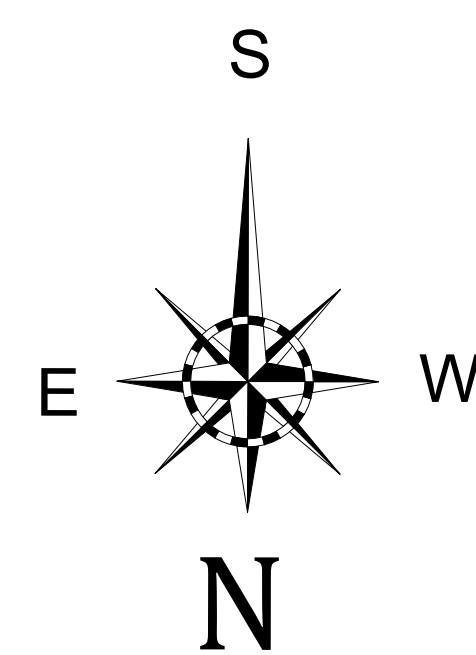
1575 SF 375 SF BALCONY 3 BEDROOM W/ MEDIA 3 BATH

ABACO
Orange Beach

J. Alan Kent
DEVELOPMENT

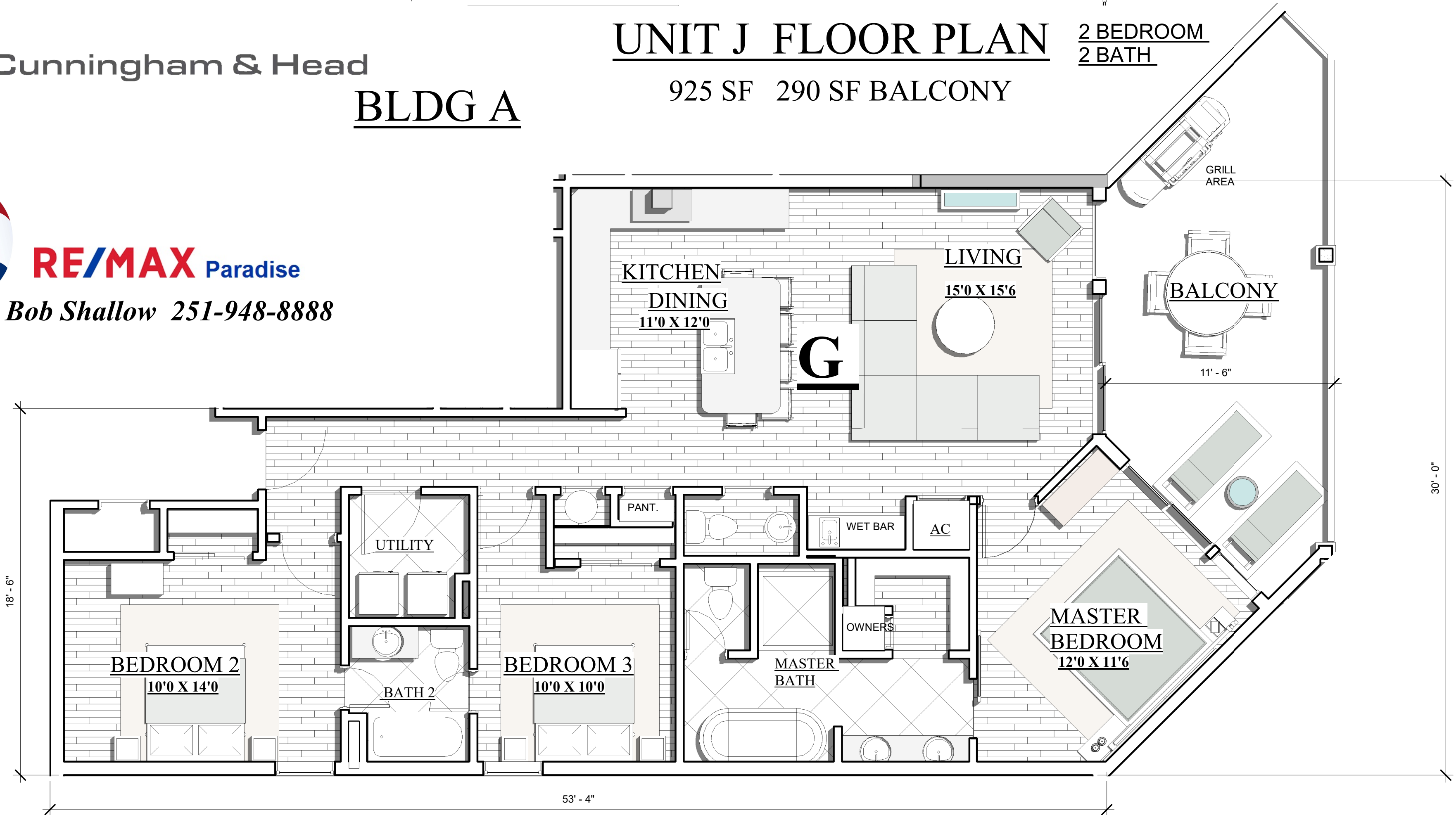
C Cunningham & Head

RE/MAX Paradise
Bob Shallow 251-948-8888



UNIT J FLOOR PLAN 2 BEDROOM 2 BATH

925 SF 290 SF BALCONY



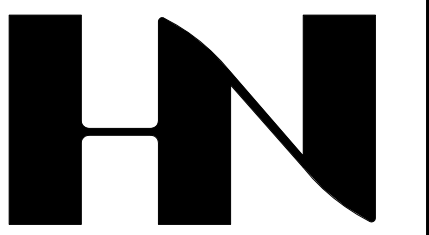
BLDG A

UNIT G FLOOR PLAN

1250 SF 290 SF BALCONY

3 BEDROOM 2 1/2 BATH

"SUBJECT TO CHANGE"
"NEED NOT BE BUILT"



HENRY NORRIS & ASSOCIATES

ARCHITECTURE & ENVIRONMENTAL DESIGN

30 N. PALAFOX
PENSACOLA, FL 32502
(850)432-6011
FAX 435-9001

ABACO
ORANGE BEACH

JOB #: Project Number
CAD: CHECKED; HN
DATE: 11-20-23

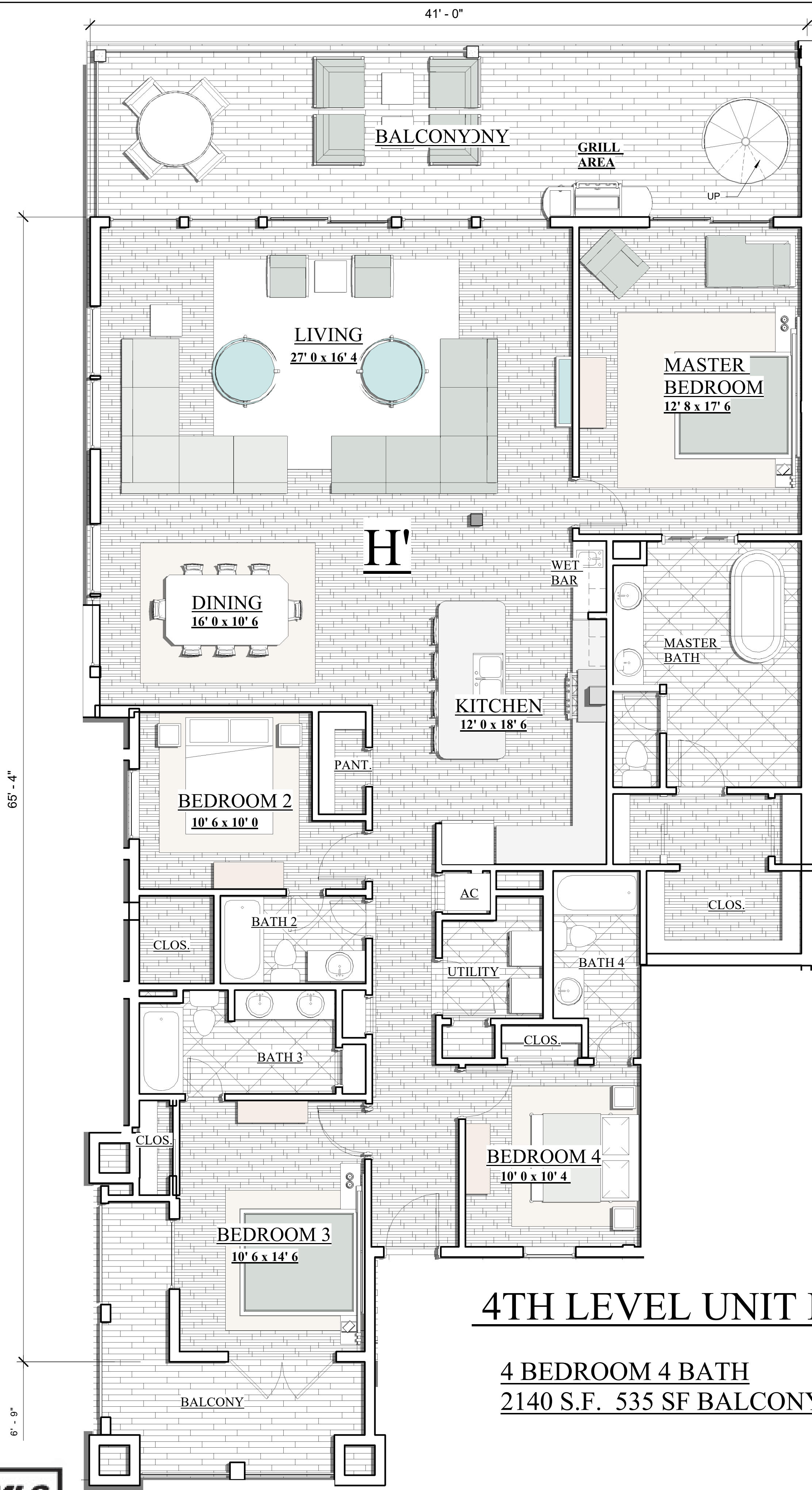
REVISIONS:

SEAL:

SHEET TITLE:
UNITS E, G & J BLDG. A

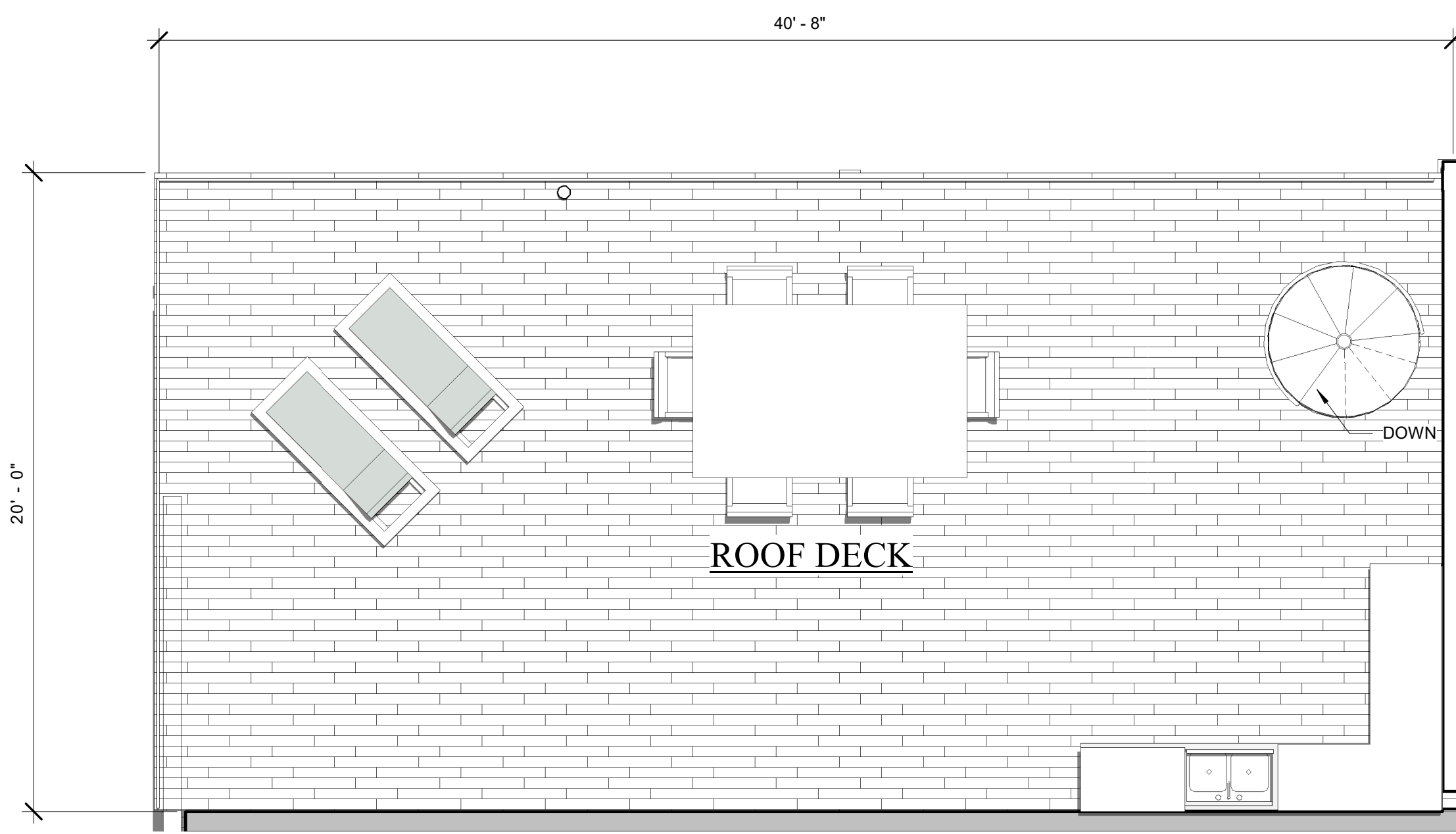
A-10





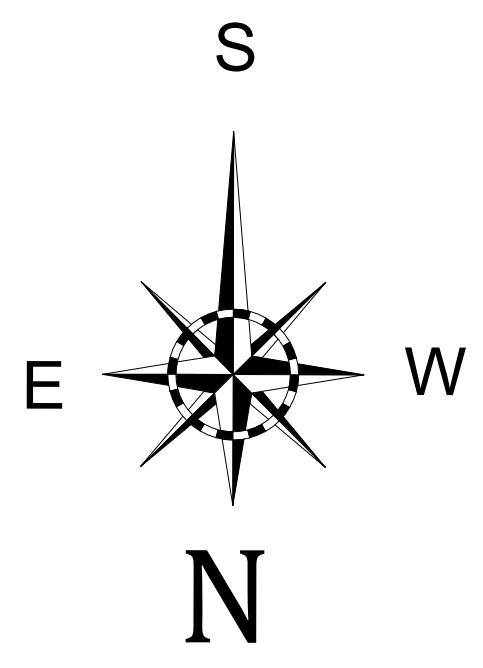
4TH LEVEL UNIT H'

4 BEDROOM 4 BATH
2140 S.F. 535 SF BALCONY

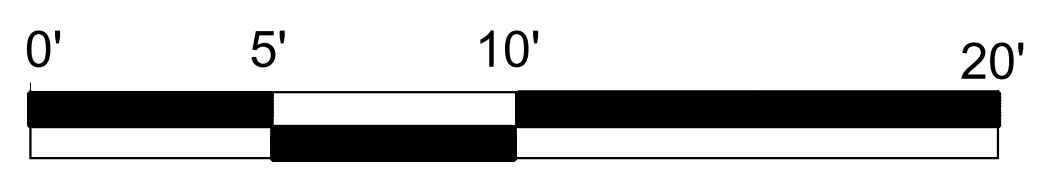


ROOF DECK - UNIT H'

800 SF TOTAL



BLDG. A



RE/MAX Paradise
Bob Shallow 251-948-8888

"SUBJECT TO CHANGE"

"NEED NOT BE BUILT"



HENRY NORRIS
&
ASSOCIATES

ARCHITECTURE
&
ENVIRONMENTAL
DESIGN

30 N. PALAFOX
PENSACOLA, FL
32502
(850)432-6011
FAX 435-9001

ABACO
ORANGE BEACH

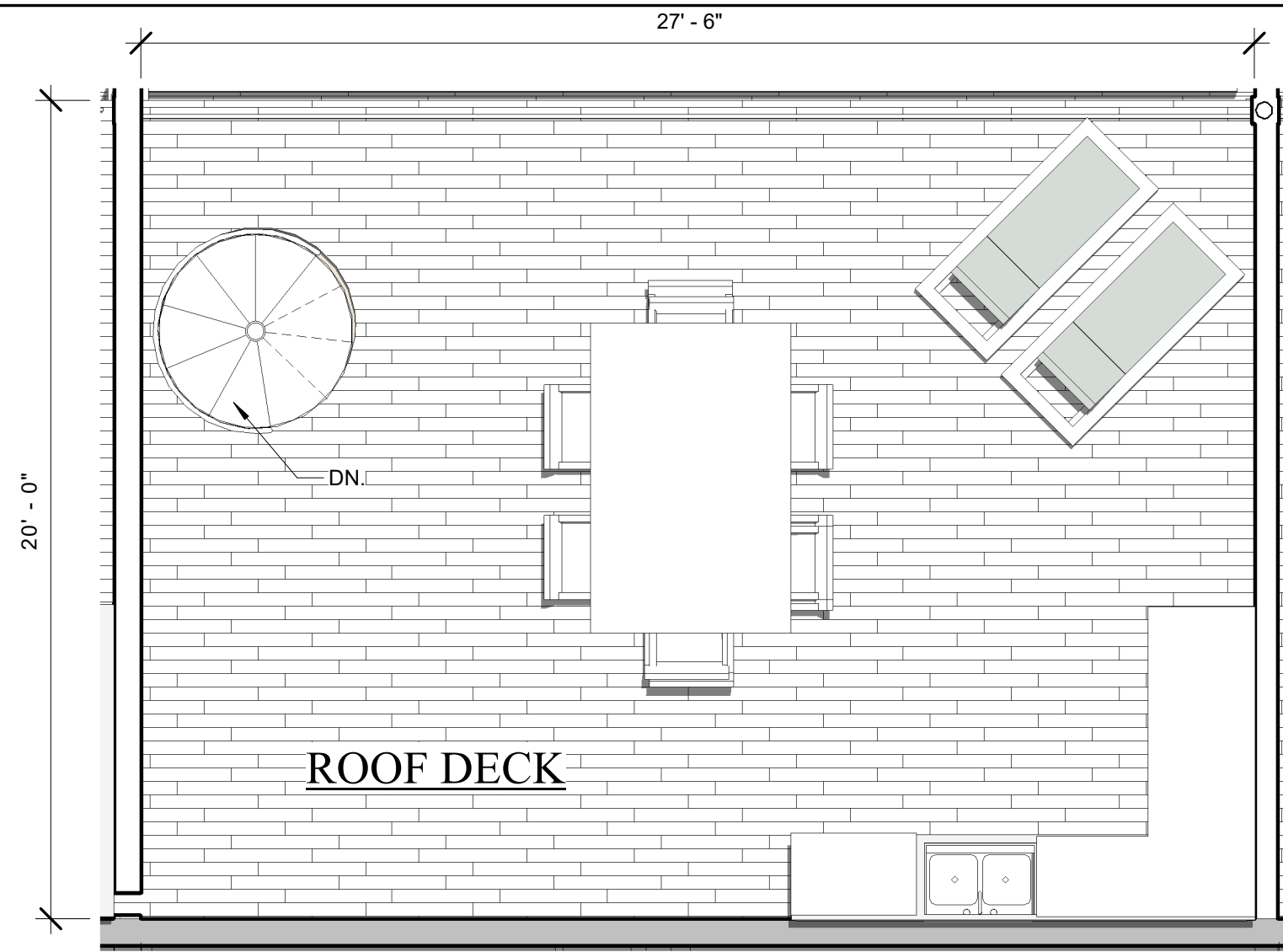
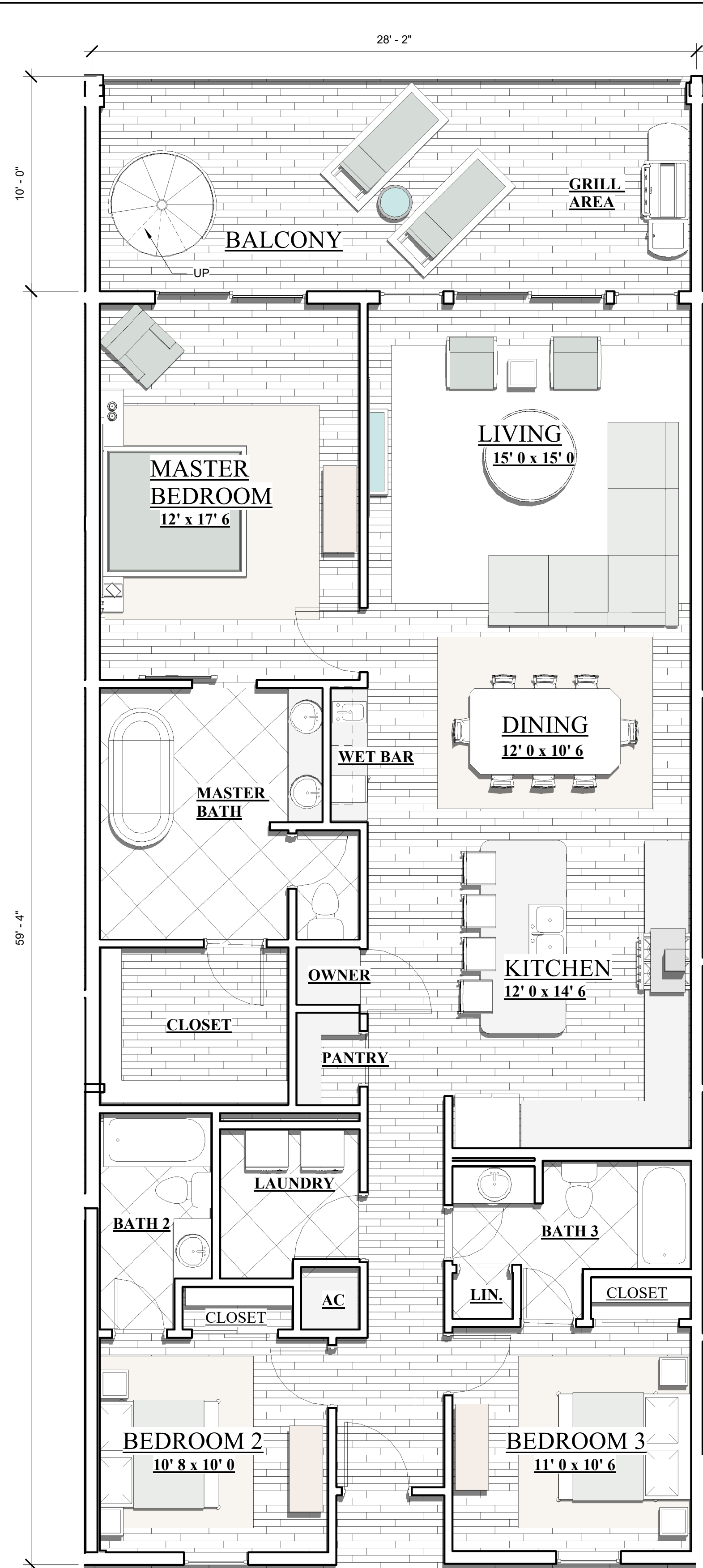
JOB #: Project Number
CAD: CHECKED; HN
DATE: 11-20-23

REVISIONS:

SEAL:

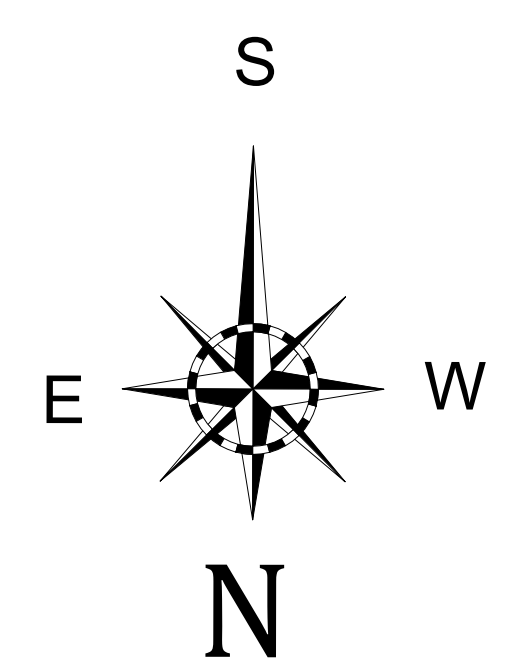
SHEET TITLE:
UNIT H' BDLG. A

A-11



ROOF DECK - UNIT A'

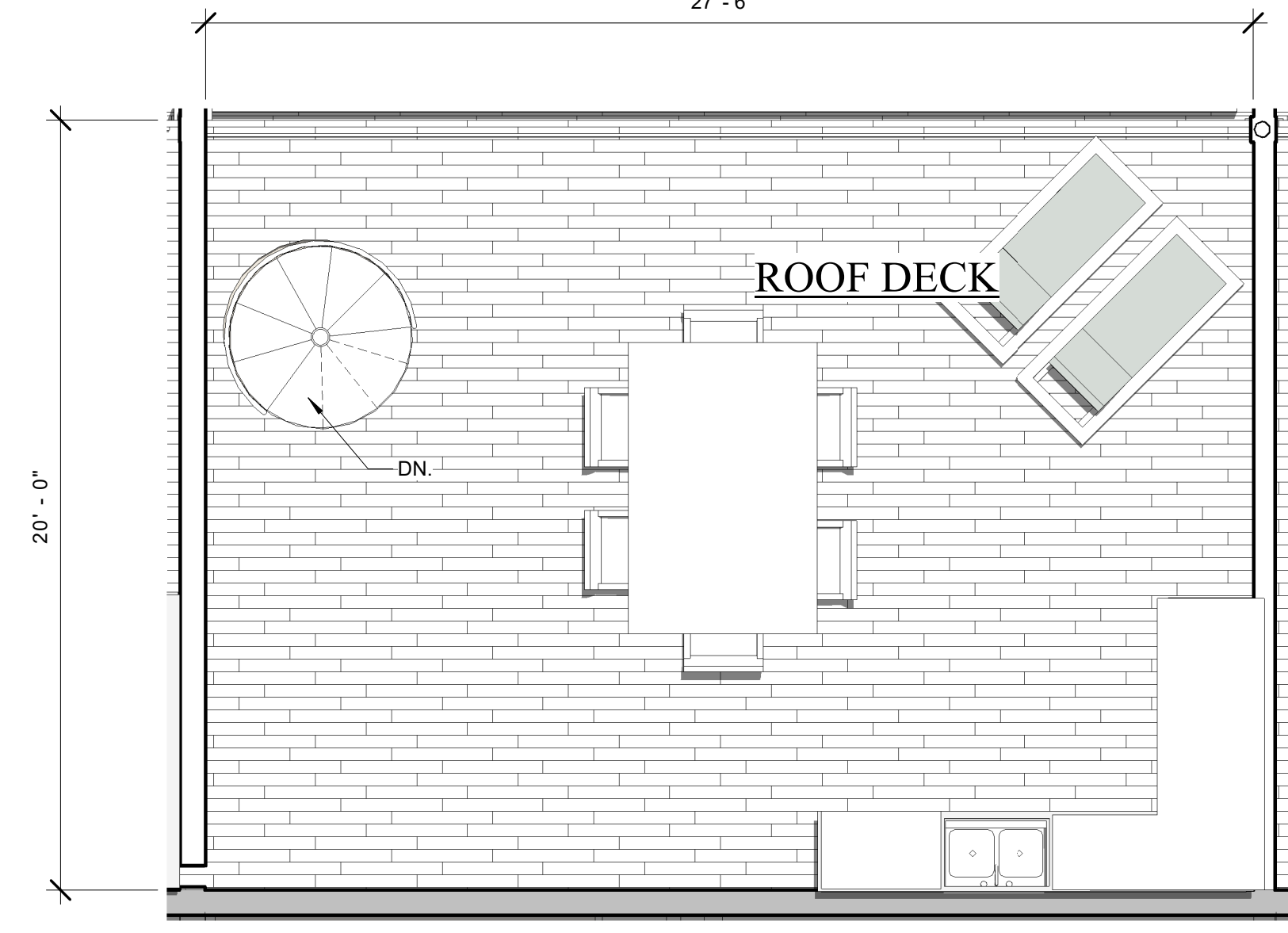
530 SF TOTAL



J. Alan Kent
DEVELOPMENT

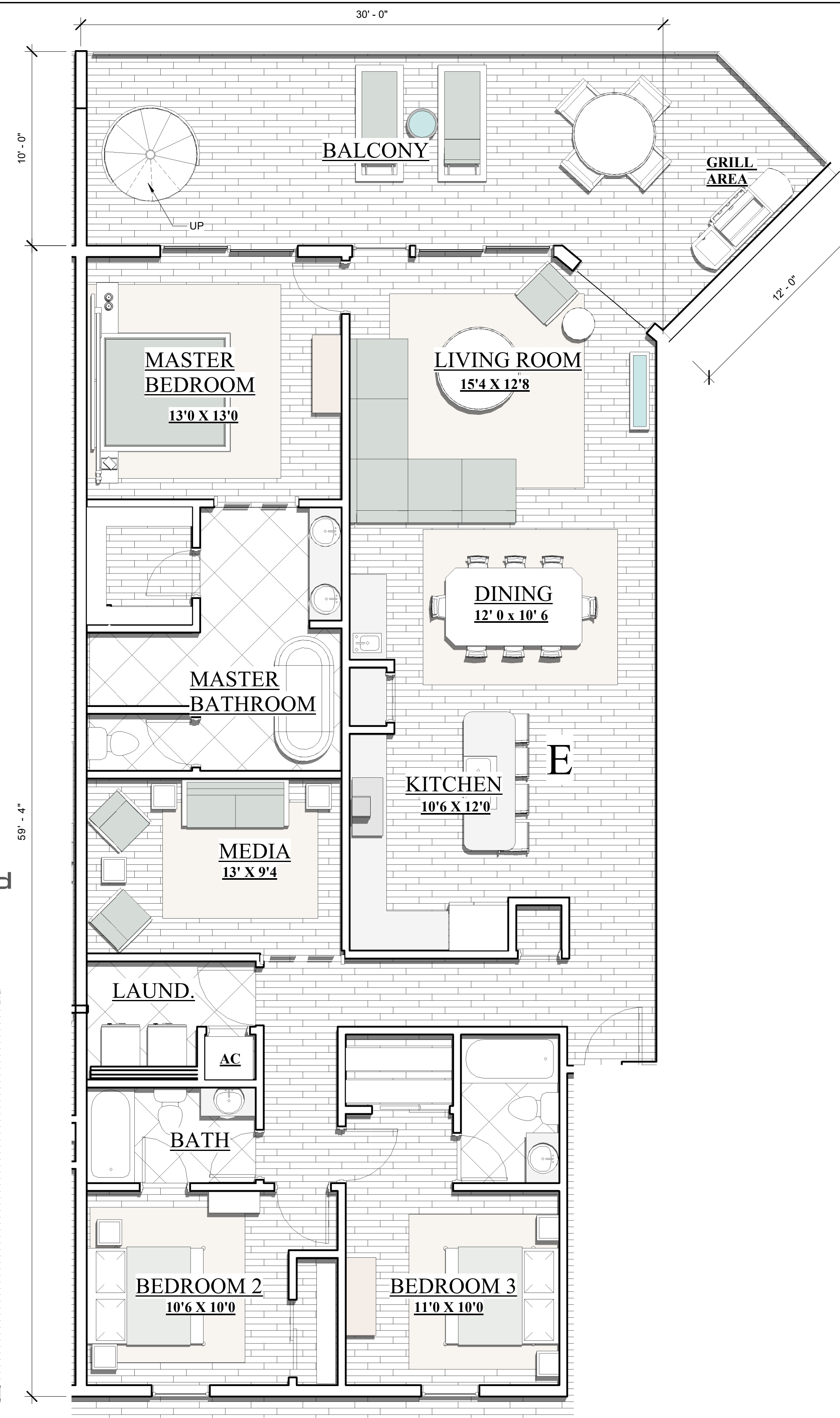
C Cunningham & Head

27' - 6"



ROOF DECK - UNIT 'E'

530 SF TOTAL



4TH LEVEL UNIT 'E'

BLDG A

3 BEDROOM W/MEDIA
3 BATH 1575 SF
BALCONY 375 SF

SUBJECT TO CHANGE
"NEED NOT BE BUILT"



4TH LEVEL UNIT A'

BLDG A

3 BEDROOM
3 BATH 1540 SF
275 SF BALCONY



RE/MAX Paradise
Bob Shallow 251-948-8888



HENRY NORRIS & ASSOCIATES

ARCHITECTURE & ENVIRONMENTAL DESIGN

30 N. PALAFOX
PENSACOLA, FL
32502
(850)432-6011
FAX 435-9001

ABACO
ORANGE BEACH

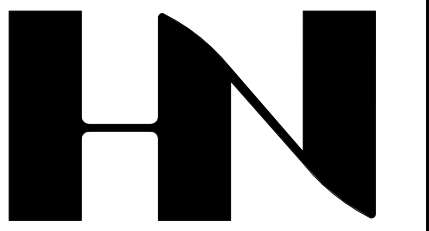
JOB #: Project Number
CAD:
CHECKED: HN
DATE: 11-20-23

REVISIONS:

SEAL:

SHEET TITLE:
UNITS A' & E'

A-12



HENRY NORRIS & ASSOCIATES

ARCHITECTURE & ENVIRONMENTAL DESIGN

30 N. PALAFOX
PENSACOLA, FL
32502
(850)432-6011
FAX 435-9001

ABACO
ORANGE BEACH

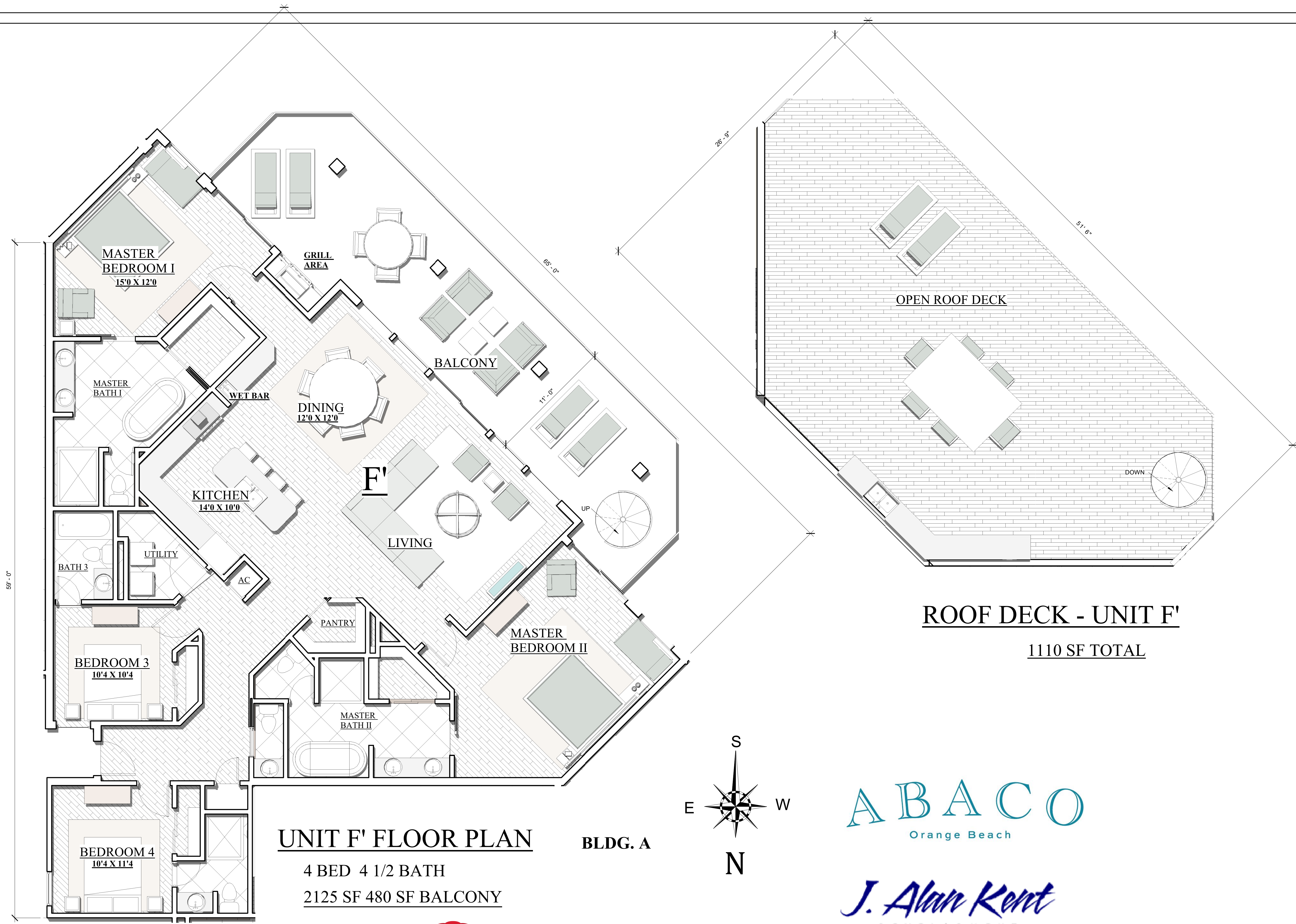
JOB #: Project Number
CAD:
CHECKED: HN
DATE: 11-20-23

REVISIONS:

SEAL:

SHEET TITLE:
UNIT F' BLDG. A

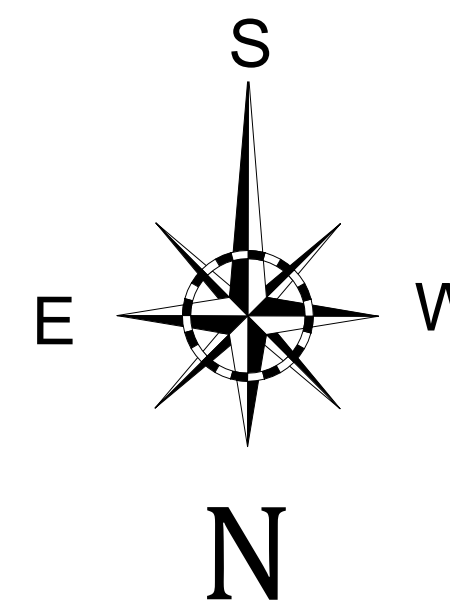
A-13



UNIT F' FLOOR PLAN

BLDG. A

4 BED 4 1/2 BATH
2125 SF 480 SF BALCONY

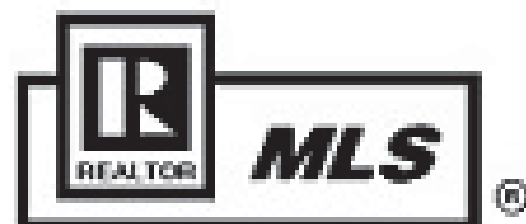


ABACO
Orange Beach

J. Alan Kent
DEVELOPMENT

C Cunningham & Head

**SUBJECT TO CHANGE
"NEED NOT BE BUILT"**



RE/MAX Paradise
Bob Shallow 251-948-8888