



HENRY NORRIS & ASSOCIATES

ARCHITECTURE & ENVIRONMENTAL DESIGN

30 N. PALAFOX
PENSACOLA, FL
32502
(850)432-6011
FAX 435-9001

ABACO
ORANGE BEACH

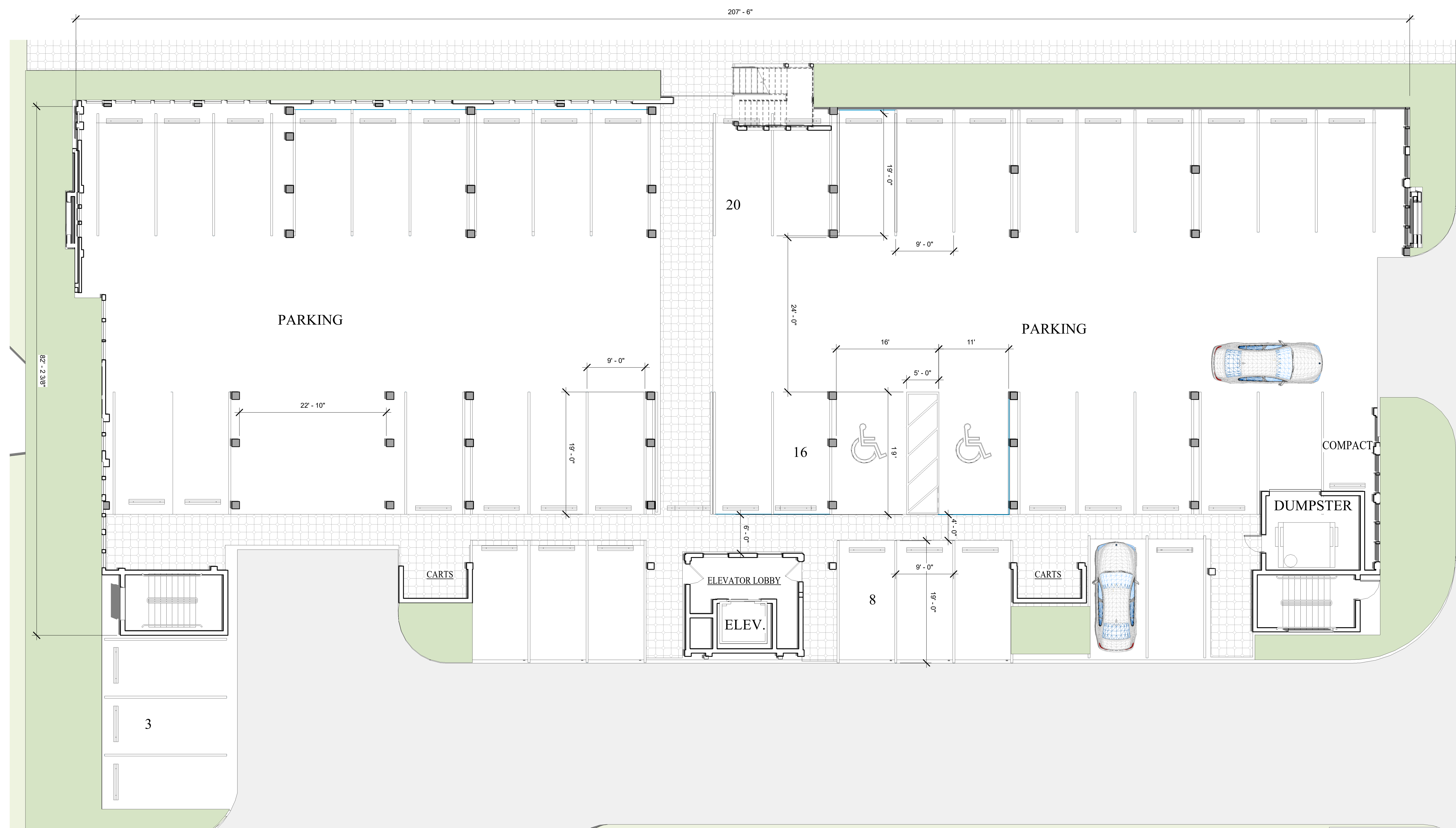
JOB #: Project Number
CAD:
CHECKED: HN
DATE: 1-18-23

REVISIONS:

SEAL:

SHEET TITLE:
LEVEL I BLDG. III A

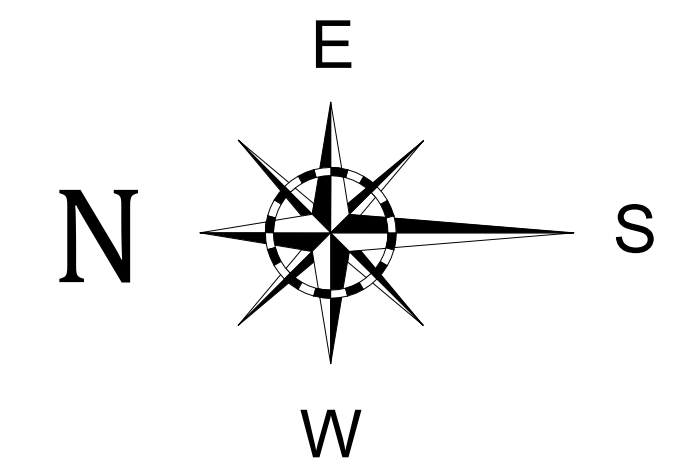
A4



BLDG. B 1ST LEVEL FLOOR PLAN

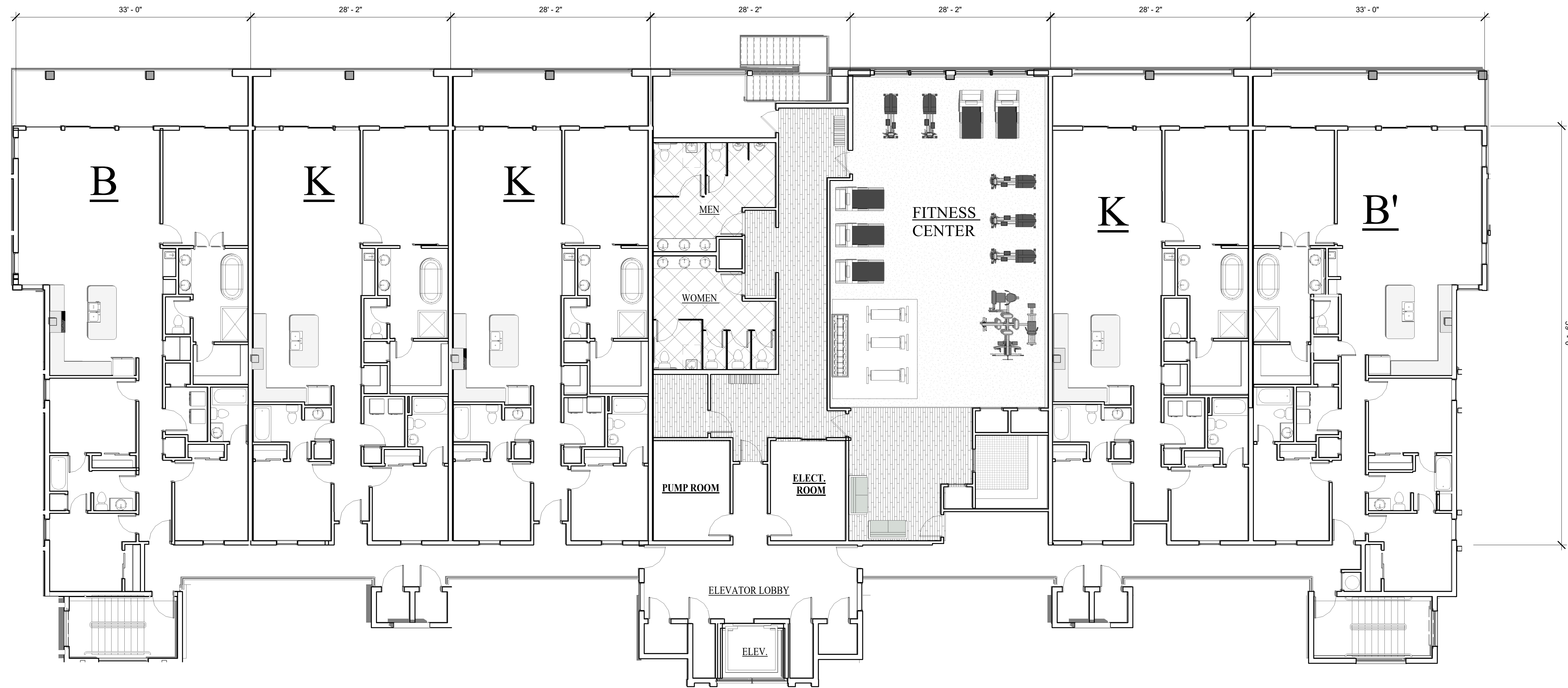
PARKING
44 SPACES REQUIRED FOR UNITS
4 SPACES REQUIRED FOR GUESTS
48 SPACES TOTAL
36 SPACES COVERED

19 UNITS TOTAL
(6) B UNITS - 4 BED/ 3 BATH (1775 SF)
(13) K UNITS - 3 BED/ 3 BATH (1540 SF)



1/18/23 "ALL PRIOR VERSIONS ARE OBSOLETE"

"SUBJECT TO CHANGE"
"NEED NOT BE BUILT"



BLDG. B 2ND LEVEL FLOOR PLAN

ABACO Orange Beach

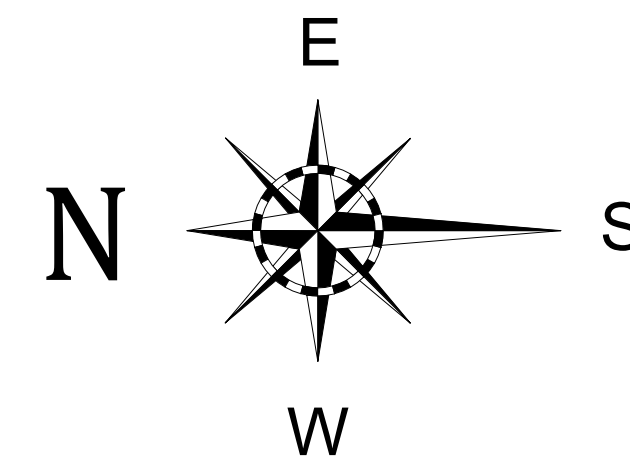
PHASE I

13 TOTAL UNIT K 3 BEDROOM
3 BATH 1540 SF

6 TOTAL UNIT B 4 BEDROOM
3 BATH 1775 SF

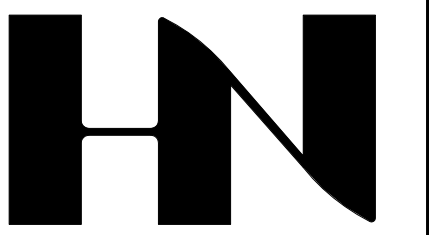
19 UNITS TOTAL

BLDG. B



1/18/23 "ALL PRIOR
VERSIONS ARE OBSOLETE"

"SUBJECT TO CHANGE"
"NEED NOT BE BUILT"



HENRY NORRIS
&
ASSOCIATES

ARCHITECTURE
&
ENVIRONMENTAL
DESIGN

30 N. PALAFOX
PENSACOLA, FL
32502
(850)432-6011
FAX 435-9001

ABACO
ORANGE BEACH

JOB #: Project Number
CAD:
CHECKED:
DATE: 1-18-23

REVISIONS:

SEAL:

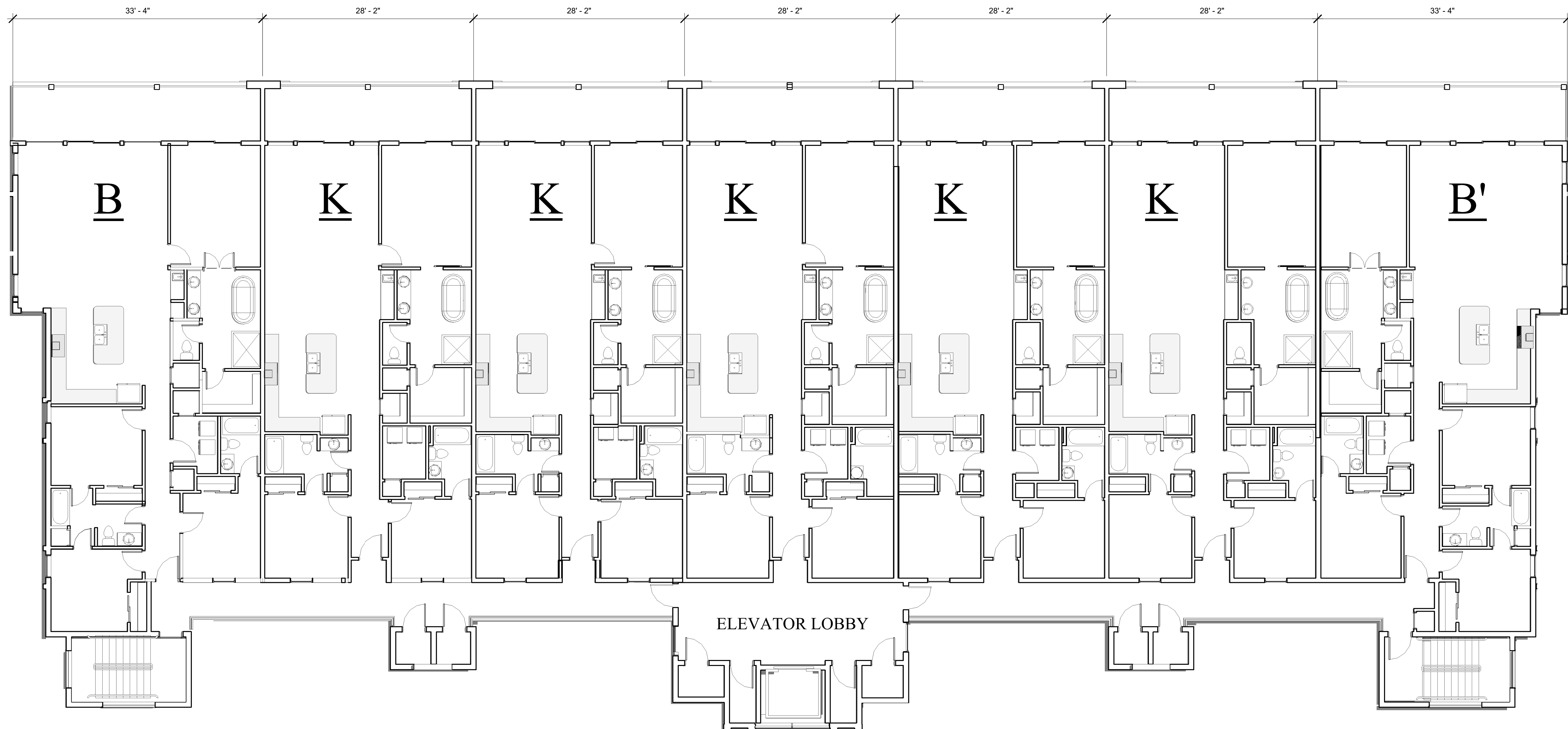
SHEET TITLE:
BUILDING III A 2ND LEVEL
PLAN

A1

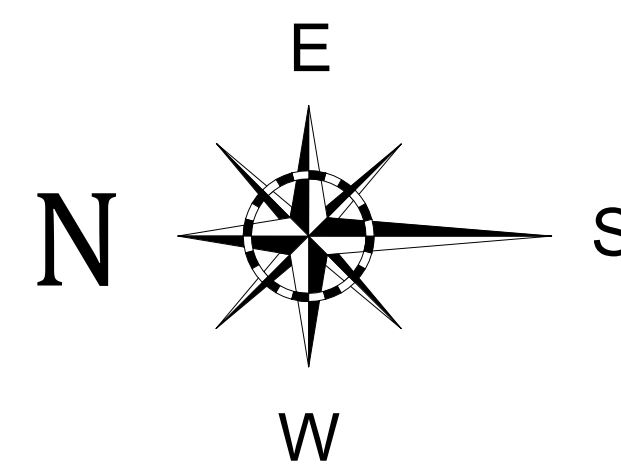


RE/MAX Paradise
Bob Shallow 251-948-8888





PHASE I **ABACO**
BLDG. B 3RD LEVEL BLDG. PLAN



1/18/23 "ALL PRIOR
 VERSIONS ARE OBSOLETE"

"SUBJECT TO CHANGE"
"NEED NOT BE BUILT"



HENRY NORRIS
 &
 ASSOCIATES

ARCHITECTURE
 &
 ENVIRONMENTAL
 DESIGN

30 N. PALAFOX
 PENSACOLA, FL
 32502
 (850)432-6011
 FAX 435-9001

ABACO
 ORANGE BEACH

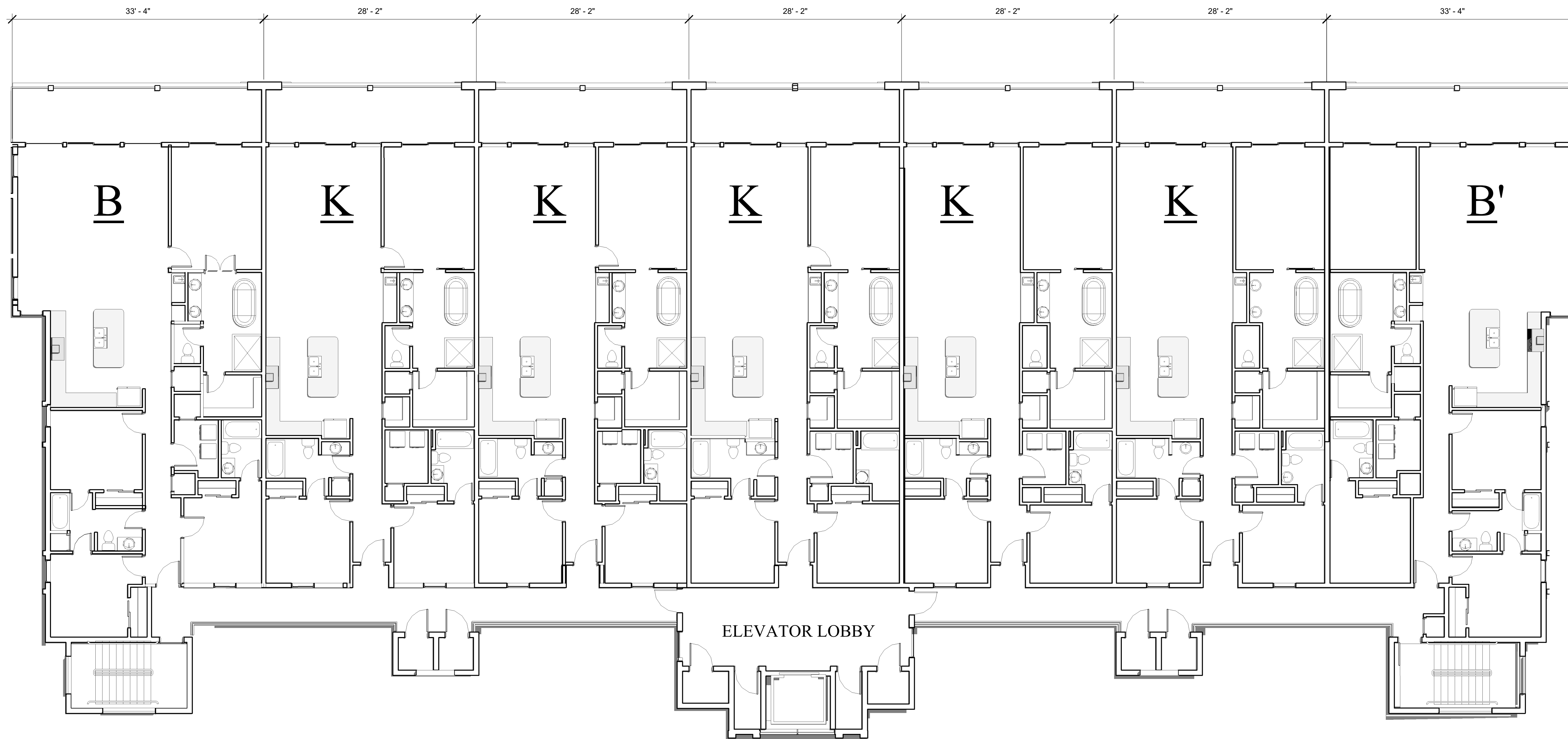
JOB #: Project Number
 CAD:
 CHECKED: HN
 DATE: 1-18-23

REVISIONS:

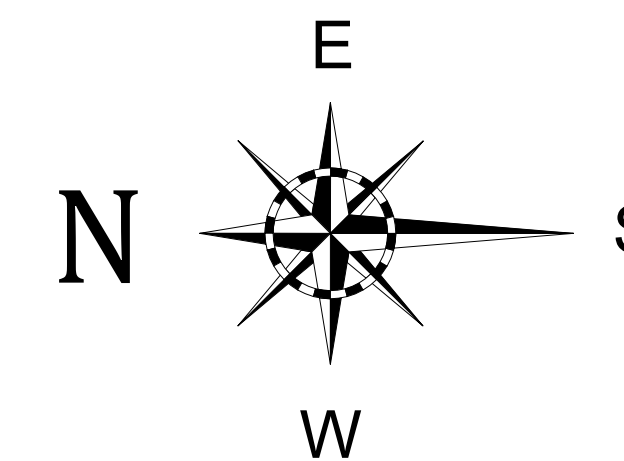
SEAL:

SHEET TITLE:
 BLDG III LEVEL 3 BLDG.
 PLAN

A26



PHASE I **ABACO**
BLDG. B 4TH LEVEL BLDG. PLAN



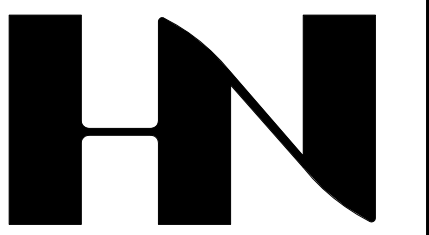
RE/MAX Paradise
 Bob Shallow 251-948-8888

ABACO
 Orange Beach

1/18/23 "ALL PRIOR
 VERSIONS ARE OBSOLETE"

"SUBJECT TO CHANGE"

"NEED NOT BE BUILT"



HENRY NORRIS
 &
 ASSOCIATES

ARCHITECTURE
 &
 ENVIRONMENTAL
 DESIGN

30 N. PALAFOX
 PENSACOLA, FL
 32502
 (850)432-6011
 FAX 435-9001

ABACO
 ORANGE BEACH

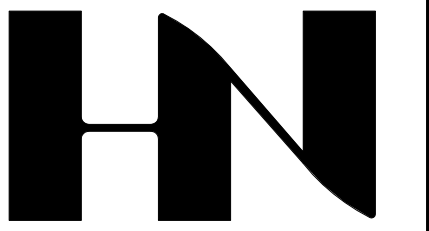
JOB #: Project Number
 CAD:
 CHECKED: HN
 DATE: 1-18-23

REVISIONS:

SEAL:

SHEET TITLE:
 BLDG. B LEVEL 4

A 12



HENRY NORRIS & ASSOCIATES

ARCHITECTURE & ENVIRONMENTAL DESIGN

30 N. PALAFOX
PENSACOLA, FL
32502
(850)432-6011
FAX 435-9001

ABACO
ORANGE BEACH

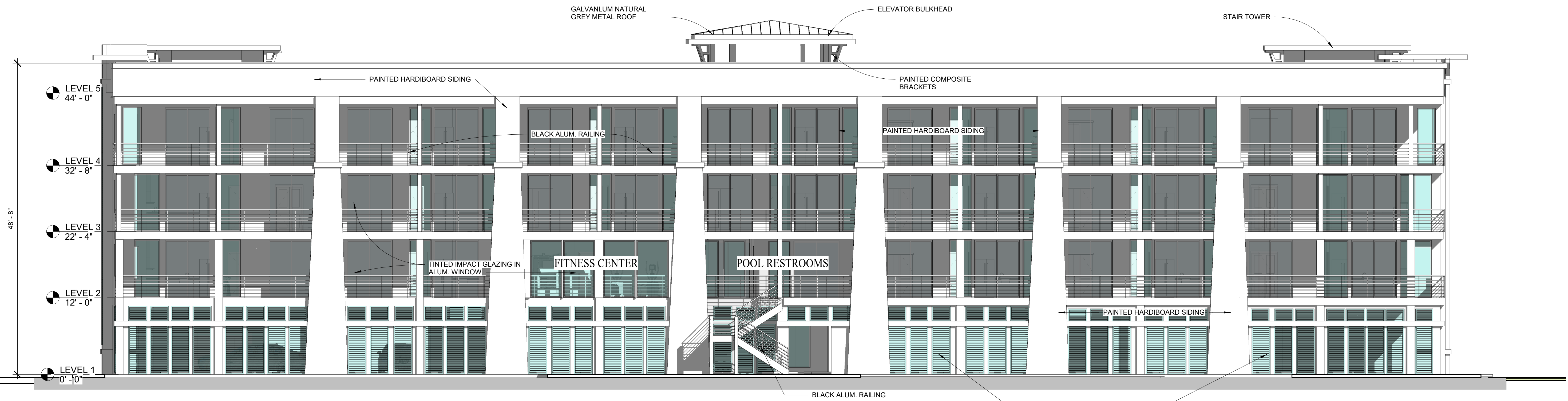
JOB #: Project Number
CAD:
CHECKED: HN
DATE: 1-18-23

REVISIONS:

SEAL:

SHEET TITLE:
Unnamed

A 14



BUILDING B - REAR ELEVATION

ABACO
Orange Beach

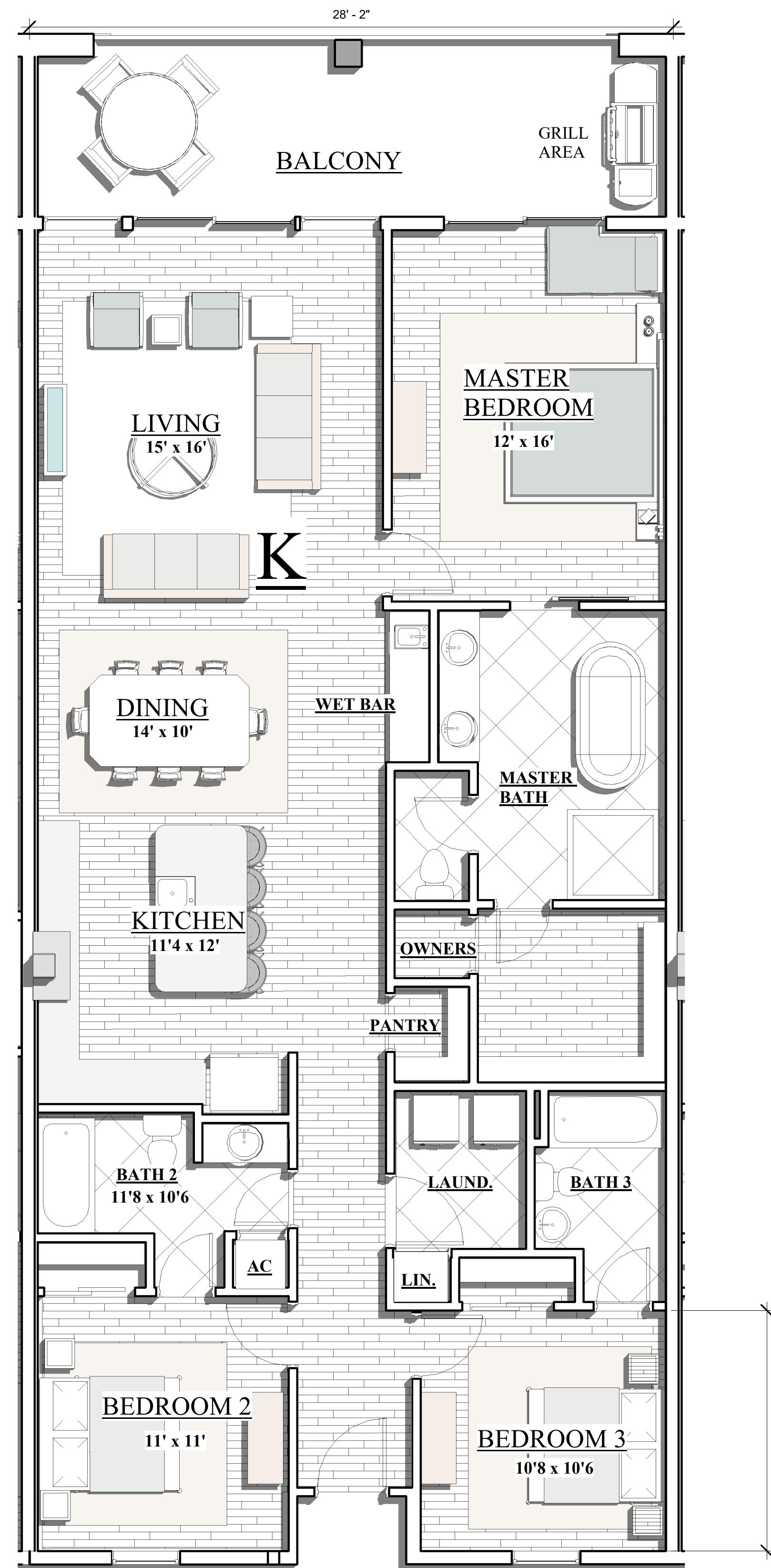


RE/MAX Paradise
Bob Shallow 251-948-8888

1/18/23 "ALL PRIOR
VERSIONS ARE OBSOLETE"

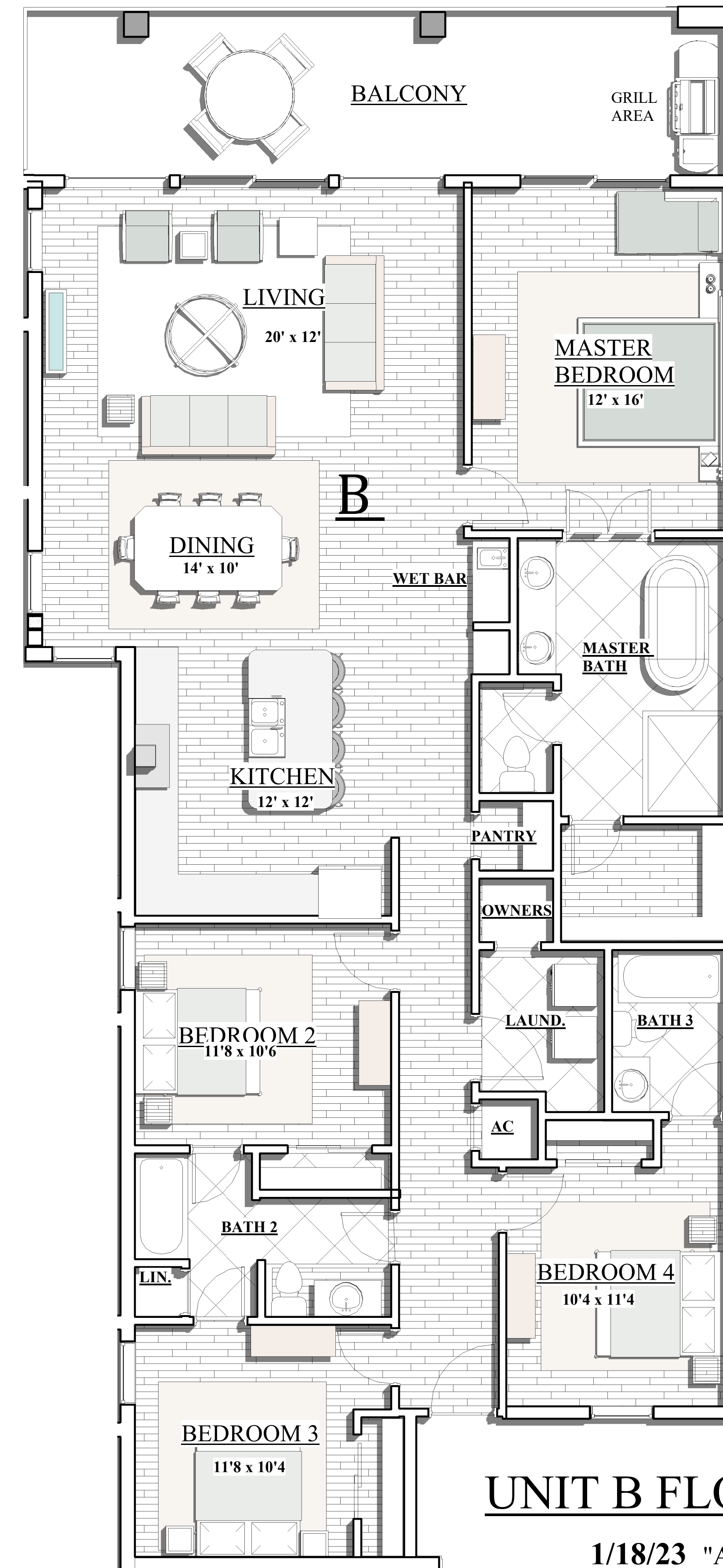
"SUBJECT TO CHANGE"

"NEED NOT BE BUILT"



UNIT K FLOOR PLAN

3 BEDROOM
3 BATH 1540 SF

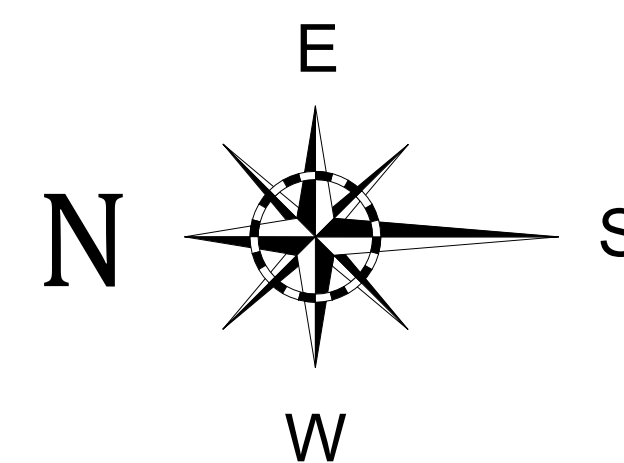


UNIT B FLOOR PLAN

1/18/23 "ALL PRIOR
VERSIONS ARE OBSOLETE"

4 BEDROOM
3 BATH 1775 SF

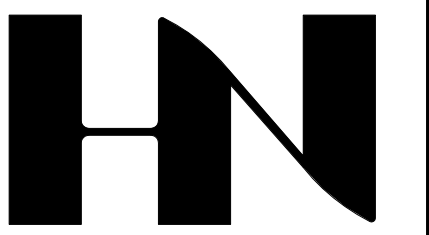
"SUBJECT TO CHANGE"
"NEED NOT BE BUILT"



BLDG. B



RE/MAX Paradise
Bob Shallow 251-948-8888



HENRY NORRIS
&
ASSOCIATES

ARCHITECTURE
&
ENVIRONMENTAL
DESIGN

30 N. PALAFOX
PENSACOLA, FL
32502
(850)432-6011
FAX 435-9001

ABACO
ORANGE BEACH

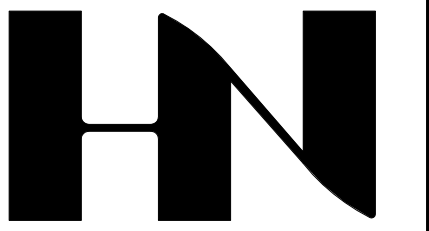
JOB #: Project Number
CAD:
CHECKED: HN
DATE: 1-18-23

REVISIONS:

SEAL:

SHEET TITLE:
UNIT K & B IN BLDG. III

A2



HENRY NORRIS & ASSOCIATES

ARCHITECTURE & ENVIRONMENTAL DESIGN

30 N. PALAFOX
PENSACOLA, FL
32502
(850)432-6011
FAX 435-9001

ABACO
ORANGE BEACH

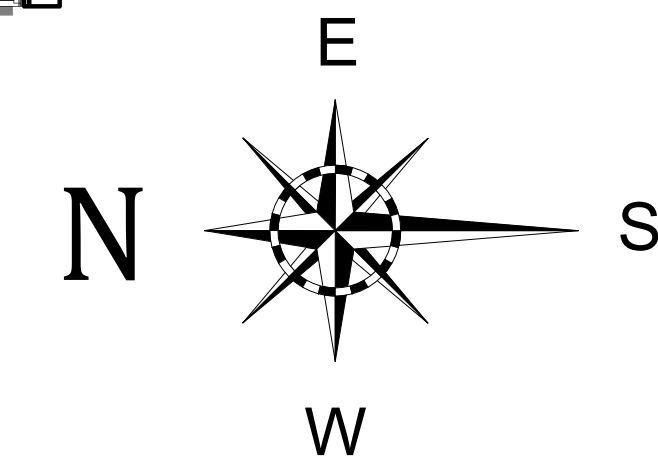
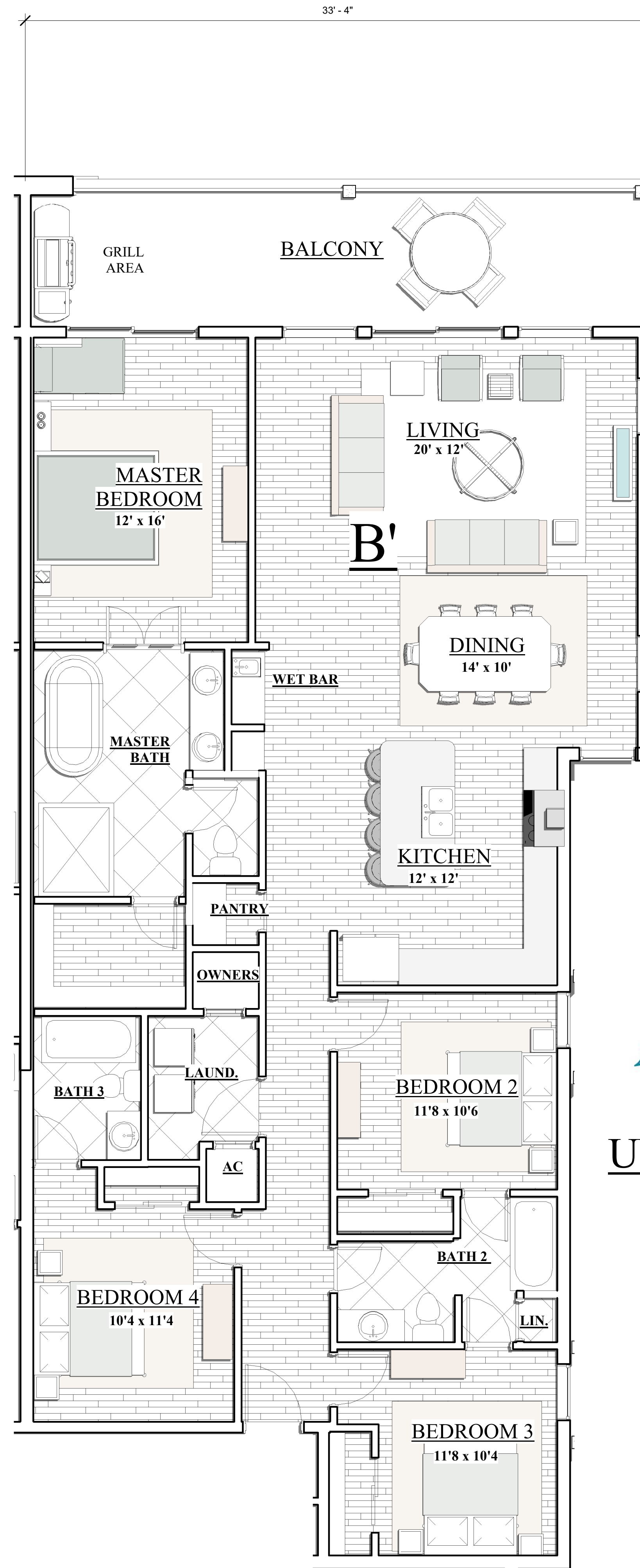
JOB #: Project Number
CAD:
CHECKED: HN
DATE: 1-18-23

REVISIONS:

SEAL:

SHEET TITLE:
Unnamed

A 16



UNIT B' FLOOR PLAN

4 BEDROOM
3 BATH 1775 SF

BLDG.B

1/18/23 "ALL PRIOR
VERSIONS ARE OBSOLETE"

"SUBJECT TO CHANGE"

"NEED NOT BE BUILT"



RE/MAX Paradise
Bob Shallow 251-948-8888